

Fluid mechanics of luminal transport in actively contracting endoplasmic reticulum

Reviewed Preprint

v2 • October 4, 2024

Revised by authors

Reviewed Preprint

v1 • April 10, 2024

Pyae Hein Htet, Edward Avezov , Eric Lauga 

Department of Applied Mathematics and Theoretical Physics, University of Cambridge, Cambridge, UK • UK
Dementia Research Institute at University of Cambridge, Department of Clinical Neurosciences, University of Cambridge, Cambridge, UK

 https://en.wikipedia.org/wiki/Open_access Copyright information

Abstract

The Endoplasmic Reticulum (ER), the largest cellular compartment, harbours the machinery for the biogenesis of secretory proteins and lipids, calcium storage/mobilisation, and detoxification. It is shaped as layered membranous sheets interconnected with a network of tubules extending throughout the cell. Understanding the influence of the ER morphology dynamics on molecular transport may offer clues to rationalising neuro-pathologies caused by ER morphogen mutations. It remains unclear, however, how the ER facilitates its intra-luminal mobility and homogenises its content. It has been recently proposed that intra-luminal transport may be enabled by active contractions of ER tubules. To surmount the barriers to empirical studies of the minuscule spatial and temporal scales relevant to ER nanofluidics, here we exploit the principles of viscous fluid dynamics to generate a theoretical physical model emulating *in silico* the content motion in actively contracting nanoscopic tubular networks. The computational model reveals the luminal particle speeds, and their impact in facilitating active transport, of the active contractile behaviour of the different ER components along various time-space parameters. The results of the model indicate that reproducing transport with velocities similar to those reported experimentally in single particle tracking would require unrealistically high values of tubule contraction site length and rate. Considering further nanofluidic scenarios, we show that width contractions of the ER's flat domains (perinuclear sheets) generate local flows with only a short-range effect on luminal transport. Only contractions of peripheral sheets can reproduce experimental measurements, provided they are able to contract fast enough.

eLife Assessment

This work explores the physical principles underlying fluid flow and luminal transport within the endoplasmic reticulum. Its **important** contribution is to highlight the strong physical constraints imposed by viscous dissipation in nanoscopic tubular networks. In particular, the work presents **convincing** evidence based on theoretical analysis that commonly discussed mechanisms such as tubular contraction are unlikely to be at the origin of the observed transport velocities. As such, it will be of relevance to cell biologists and physicists interested in organelle dynamics. As this study is solely theoretical and deals with order of magnitude estimates, its main conclusions await experimental validation.

<https://doi.org/10.7554/eLife.93518.2.sa2>

I. Introduction

The mammalian endoplasmic reticulum (ER) is the single largest intracellular structure (see sketch in **Fig. 1a** [\[1\]](#)). The organelle is made up of membranous sheets interconnected with the nuclear envelope and branching out into a planar network of tubules extending throughout the cell periphery (**Fig. 1b** [\[2\]](#)). The ER dynamics on a second scale include the cytoskeleton-assisted tubular network restructuring [\[2, 3\]](#) and an interconversion between two distinct forms, including a narrower form covered by membrane curvature-promoting proteins [\[4\]](#). The ER morphology and its dynamics presumably enable and facilitate its functions: the ER is responsible for the production, maturation and quality-controlled folding of secretory and membrane proteins, which constitute approximately a third of the cell's proteome [\[5\]](#). The organelle's membranes also harbour the lipid biosynthesis machinery, while its lumen stores calcium. The contiguous nature of the ER is believed to ensure an efficient delivery of all these components across the cell periphery. In particular, ER luminal continuity and transport were demonstrated to kinetically limit calcium delivery for local release [\[6\]](#). The sensitivity of neurons with long axonal extensions to ER defects in ER morphogens suggests that a perturbed ER transport may link ER integrity and neurodegeneration. Such a link might help explain why mutations in genes involved in ER shaping cause neuronal diseases, including motor neuron degeneration of hereditary spastic paraplegia [\[7\]](#), sensory neuropathy [\[8\]](#) and retinitis pigmentosa [\[9\]](#).

Timely transport of the content within the ER is therefore integral to the function of the cell. The geometry and dimensions of several cell types with extensive ER-containing projections (e.g. neurons and astrocytes) pose a kinetic challenge for material distribution with physiological timing. These considerations predict the need for an active luminal transport to ensure timely material homogenisation across the vast ER. Empirically, the active nature of the ER luminal transport is suggested by a series of observations which include the sensitivity of GFP bulk mobility (measured by FRAP and photoactivation) to ATP depletion [\[10, 11\]](#). However, these bulk fluorescence intensity dynamics techniques do not provide information on transport mode. By default, the intensity dynamics were historically fitted to diffusion models and the mobility kinetics was often expressed in terms of effective diffusion coefficients. Measurements of single particle motion and chasing locally photoactivated luminal protein marker over distances, circumvent this limit and are also inconsistent with molecular diffusion [\[12\]](#).

However, the mechanism for generating ER luminal flows remains unclear. Understanding the mode of material exchange across the organelle is crucial for rationalising the ER shaping defects-related neuronal pathologies [\[13\]](#), identifying factors controlling ER transport and informing

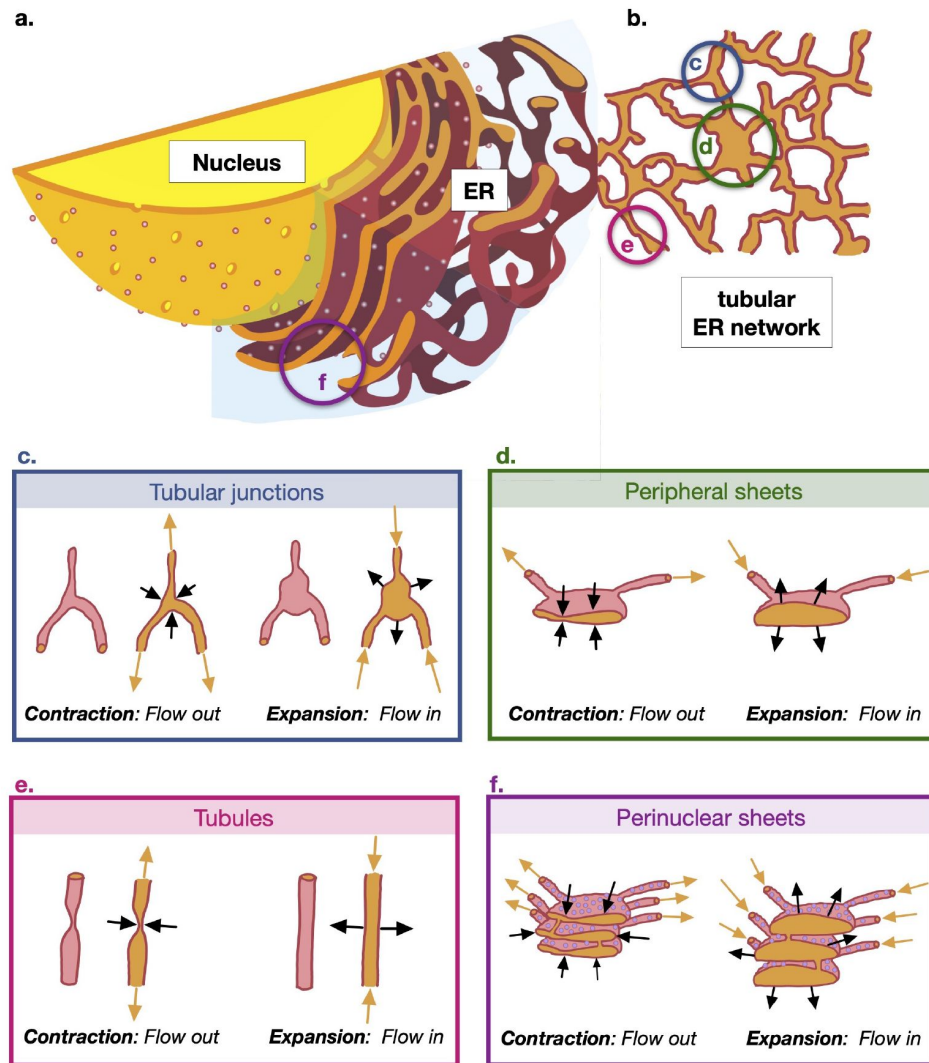


FIG 1

Sketch of the cellular geometry with nomenclature of the sub-cellular structures discussed in the paper. **a.** Cross section of cell showing nucleus and Endoplasmic Reticulum (ER) (adapted from image in public domain [40]). **b.** Cut through cross section of the tubular ER network at the edge of cell. **c.** Sketch of the contraction and expansion of the tubular junctions (3D view and cross section); contractions leads to flow leaving the junction into the network while expansions lead to flow leaving the network and entering the junction. **d.** Contraction and expansion of the peripheral sheets. **e.** Contraction and expansion of the tubules driven by pinching (3D view and cross section). **f.** Contraction and expansion of the perinuclear sheets.

the development of ER transport modulation approaches with health benefits. Based on ER marker velocity fluctuations measured in single particle tracking and the detection of transient narrowing points in the tubules by improved super-resolution and electron microscopy (EM) [11], it has been postulated that these active flows may result from the stochastic contractility (pinching and un-pinching) of ER tubules at specific locations along their lengths (see sketch in **Fig. 1e**); other plausible mechanisms for flow generation were also considered. However, measurements for testing this pinching hypothesis are currently inaccessible, due to limitations in space-time resolution of live cell microscopy; the live cell-compatible super-resolution techniques achieve resolution of ~80 nm at the relevant speed, while the tubular radius is estimated in the range 30 – 60 nm [12, 14, 15]. Improvement or resolution currently can only be achieved by trading off speed. To circumvent these experimental difficulties, in the current study we use mathematical modelling to quantitatively analyse the relevant scenarios of actively contractility-driven flows and to explore how various sets of spatio-temporal parameters of ER contractility may produce flows facilitating solute transport in quantitative agreement with experimental measurements.

We illustrate as a simple schematic in **Fig. 1** the different contractility mechanisms in the different regions of the ER and where they are located in relation to the cell centre/nucleus. The ER close to the cell nucleus is geometrically complex, consisting of stacks of perinuclear sheets (**Fig. 1a**). Away from the nucleus, the ER geometry simplifies considerably and the ER at the cell periphery is comprised of a planar network of tubules (**Fig. 1b**). In the current work we study flows and transport in this planar, tubular region; this is also the region of the ER network in which single particle tracking measurements were carried out in Ref. [11]. We consider as potential driving mechanisms for the observed solute transport the contractility of components located in the same planar tubular region, namely, tubular junctions (**Fig. 1c**), peripheral sheets (**Fig. 1d**), and tubules (**Fig. 1e**), as well the contractility of perinuclear sheets (**Fig. 1f**) located closer to the nucleus.

First, assuming that the flow is driven by tubule contractions (shown schematically in **Fig. 1e**), we construct a physical and mathematical model of the ER network and solve it for the flows inside the network (description in Methods §IV). We use our model to carry out numerical simulations to study the motion of Brownian particles carried by these flows and show that the tubule pinching hypothesis is not supported by the results of our model (§II A), a result independent of the network geometry (§II B). The failure of active pinching to drive strong flows can be rationalised theoretically by deriving a rigorous upper-bound on the rate of transport induced by a single pinch, (§II C), including possible coordination mechanisms (§II D). Only by increasing both the length of pinches and their rate can beyond admissible values can we produce particle speeds in agreement with measurements (§II E). We then explore in §II F two different hypotheses as possible explanations for the active ER flows, first the pinching of the junctions between tubules (**Fig. 1c**) and then the pinching of the two types of ER sheets, perinuclear (**Fig. 1f**) and peripheral (**Fig. 1d**). We investigate the conditions under which these contractility mechanisms would be consistent with the experimental measurements of active transport in Ref. [11].

The question of how the endoplasmic reticulum homogenises its content across cell expanses is an open problem which extends to the fundamentals of cell biology. Even though it is highly debated in the field, it is extremely difficult to study due to the enormous technical limits of directly observing intraorganellar nanofluidics. Thus, our study represents a meaningful effort to break through this impasse by conducting a meticulous analysis of nanofluidic scenarios. The findings we present constitute the best currently possible endeavour to shed light on this challenging problem. Our results do suggest that the biological origin of solute transport in ER networks remains open and call for extensive empirical exploration of the alternative mechanisms for flow generation.

II. Results

A. Tubule contractility-driven ER luminal motion yields inadequate transport kinetics

To assess the kinetics of particle motion in the lumen of tubular structures, detailed in [Fig. 1](#), in response to their contractility, we generate an *in silico* simulation model of the process. The model incorporates local calculations for the low-Reynolds number hydrodynamics of a contracting tubule, assuming in the first instance the no-slip boundary conditions at the tubule walls (i.e. Poiseuille hydrodynamics), into a global analysis of the flows throughout the network geometry, by using Kirchhoff's Laws and standard graph theoretical results (see Methods §IV for details).

We initially implement the model's numerical simulations of particle transport in a re-constructed ER network of a COS-7 cell [\[11\]](#) (which we label C0, see §IV A) with tubules locally contracting stochastically according to the spatiotemporal parameters suggested by microscopy measurements [\[11\]](#). We will therein refer to these contractions, illustrated in [Fig. 1e](#), as 'pinching', with relevant parameters that include the duration and frequency of pinch events, and the length that the pinch sites occupy along the tubule (for details of the pinching kinematics, see Methods §IV B). An estimate reveals that these pinches are indeed afforded by biologically realistic forces, of the order of 30 pN (see Methods §IV H).

The fluid flows in the edges of the network (model in §IV C computed as detailed in §IV D) reveal a rapid direction alternation of luminal currents (on average with a frequency of approximately 50 Hz), as reflected in the changes of the axial velocity sign ([Fig. 2a](#)), with an average flow speed of 1.3 $\mu\text{m/s}$ (see also Supplementary Video S1). Further, the resulting instantaneous speed distribution of Brownian particles advected by these flows (methodology in §IV E) is considerably shifted relative to the experimental counterpart [\[11\]](#) towards lower values ([Fig. 2b](#)). Similarly, the distribution of average edge traversal speeds (defined precisely in §IV F) from our simulations (mean 4.4 $\mu\text{m/s}$, solid blue line in [Fig. 2c](#)) is lower than the experimentally measured speed distribution (mean 45 $\mu\text{m/s}$; [Fig. 2c](#), inset) by an order of magnitude.

Moreover, the results for all measures of transport under pure diffusion, in the absence of pinching-induced flows, are virtually indistinguishable from those where the pinching-driven flows are included (see [Fig. 2b-c](#)). Within the framework of transport theory, this conclusion can be rationalised by estimating the relevant Péclet numbers that measure the relative importance of advection and diffusion. Using the average value $\bar{U} \sim 1.3 \mu\text{m/s}$ of the mean flow speeds over time and edges as a velocity scale, we may estimate a mean Péclet number as $\text{Pe} \sim \text{Pe} \sim \bar{U}R/D$. Using $R = 30 \text{ nm}$ and the measured diffusivity $D \approx 0.6 \mu\text{m}^2\text{s}^{-1}$ [\[11\]](#), this leads to the estimate $\text{Pe} \sim 0.07$. Flows affect transport for Péclet numbers above order-one values [\[16\]](#), and therefore the pinching-driven flows have a negligible influence on the transport inside the ER network. In order for fluid motion to have a noticeable effect, one would thus need flows to be either stronger, or sustained in one direction for longer.

The chaotic flows produced by the pinching events with stochastic parameters suggested by resolution-limited microscopy [\[11\]](#) appear too weak to generate fast, non-diffusive edge traversals.

Importantly, our conclusions remain unchanged upon relaxing the no-slip boundary conditions, an important point to consider since the tubule membranes themselves could be moving in response to the nanoscale fluid flow. This can be modelled by introducing a finite slip boundary condition to couple the membrane-bound lipids with luminal flows (see Methods §IV G for details).

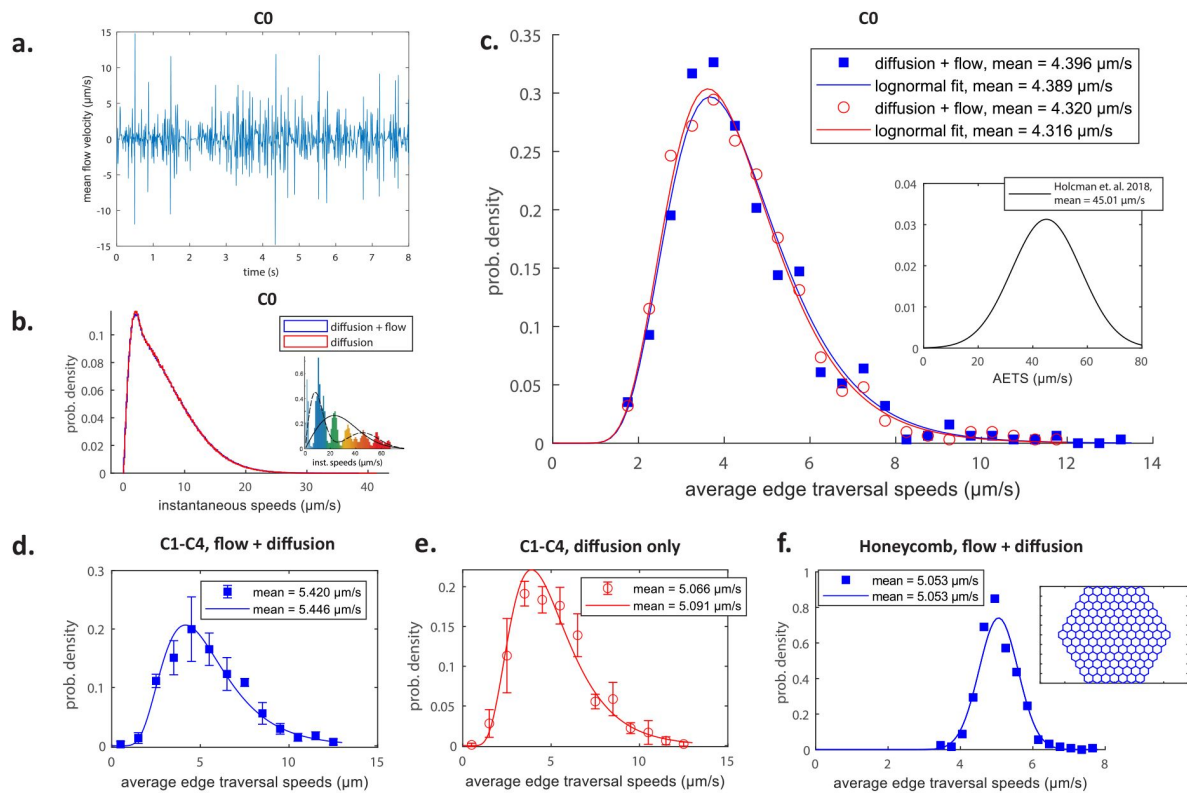


FIG 2

A quantitative test of the pinching-tubule hypothesis. **a.** Cross-sectionally averaged flow velocities in a typical edge as obtained in our simulations. **b. c.** Histograms of instantaneous speeds (b) and edge traversal speeds (c) using data from simulations in the C0 network with flow (blue) and with just diffusion (red). The insets in (b) and (c) illustrate the distributions of instantaneous speeds and average edge traversal speeds respectively as experimentally measured in Ref. [11]. The symbols indicate the values taken by the probability mass function and the curves are log-normal distributions fitted to all average edge traversal speeds obtained. **d-f.** Histograms of average edge traversal speeds obtained from simulations in networks C1-C4 from Fig. 9d with flow (d) and only diffusion (e) and from simulations in the regular honeycomb network with active flows (f). The inset in (f) illustrates the honeycomb geometry. Points indicate mean \pm one standard deviation over the four networks (C1-C4) of normalised frequencies in each speed range; curves are log-normal (d-f) or normal (f) distributions fitted to all average edge traversal speeds for each set of pinch parameters. The means of the original simulation results and of the fitted distributions are indicated in the legends in each of (c-f).

Our simulations show that slip boundary conditions have virtually no effect on the average edge traversal speeds (**Fig. 3a**). Physically, while a non-zero wall slip does change the shape of the flow profiles in the tubules (**Fig. 3b**), it does not modify the mean flow speeds which directly affect global particle transport. These results justify our use of Poiseuille hydrodynamics (no-slip boundary conditions) throughout this work.

B. Tubule pinching-induced transport is network geometry independent and fails to facilitate luminal homogenisation

To estimate the contribution of the network geometry to the outcomes of our transport simulations, we compare results across four different ER structures, which we label C1-C4. We illustrate these reconstructed networks along with the source data in **Fig. 9**. The distributions of the average edge traversal speeds appear insensitive to ER structure variations for both pinching-induced and exclusively diffusional transport. This is reflected in the small deviations from the mean of the data points averaged across the different structures (**Fig. 2d-e**). Further, pinching-induced flows inside a regular honeycomb network (**Fig. 2f**, inset) with a typical ER edge length (1 μm) appear to be within a reasonable variance compared to the natural networks. Therefore, this mathematical idealisation of the ER network geometry can be used for exploring the consequences of the network ultrastructure contractility on transport kinetics in a standardised manner.

To test the effectiveness of the particle velocities for facilitating luminal material exchange across the ER, we track homogenisation kinetics by measuring intermixing of particles of two distinct colours equally seeded in each half of a honeycomb network at $t = 0$ (**Fig. 4**; see also Supplementary Video S2 for the flows inside such a network driven by pinches with the parameters from [11]). The measure of homogenisation is given by the variance $\text{Var}(\phi(t)) \equiv \text{Var}(n_b(t) - n_r(t))$ over twenty regions of the network (**Fig. 4a**, horizontal lines) of the difference between the numbers n_b (blue) and n_r (red) of particles of each colour in region; note $\text{Var} = 0$ represents perfect homogeneity. The measures of mixing over time for pure diffusion and active transport with parameters [11] from **Fig. 2** show a nearly complete overlap (**Fig. 4e**; see also Supplementary Videos S3 and S4), distinct from faster mixing under stronger flows in a network driven by pinches whose lengths are increased to their maximum possible value (i.e. the length of the tubule) and which are in addition sped up by a factor of 10 (see Supplementary Video S5; see also §II E for a discussion of the effects of artificially strong pinch parameters on average edge traversal speeds). This indicates that even if the experimental particle speeds were overestimated, the presumed pinching parameters would be inadequate to facilitate ER luminal material exchange.

C. Theoretical analysis of advection due to a single pinch explains weak pinching-induced transport

The slow luminal transport driven by the pinching-induced flows is intrinsically linked to the volume of fluid expelled by each pinch during a contraction. The fundamental reason underlying the weak pinching-induced transport is that individual pinches are very weak generators of flow; even in the best possible configuration, the volumes of fluid pushed by each pinch are too small to impact luminal transport. Specifically, in Methods (§IV I 1), we mathematically show that, given a pinch of length $2L$, the maximum distance Δz_{max} a suspended particle may be advected instantaneously by an individual pinch is

$$\Delta z_{\text{max}} = \frac{8}{3}L. \quad (1)$$

FIG 3

Impact of non-zero slip length on transport and flow. (a) Distributions of average edge traversals speeds in simulations of a C1 network pinching with the original pinch parameters as measured in Ref. [11] and used in Fig. 2, for different slip lengths $\lambda = 0, 3, 30$ and 300 nm. (b) Longitudinal flow profile $u(r)$ inside a cylindrical tubule for different slip lengths, all with the same volume flux Q ; an increase of the slip length leads to a redistribution of the flow in the cross section.

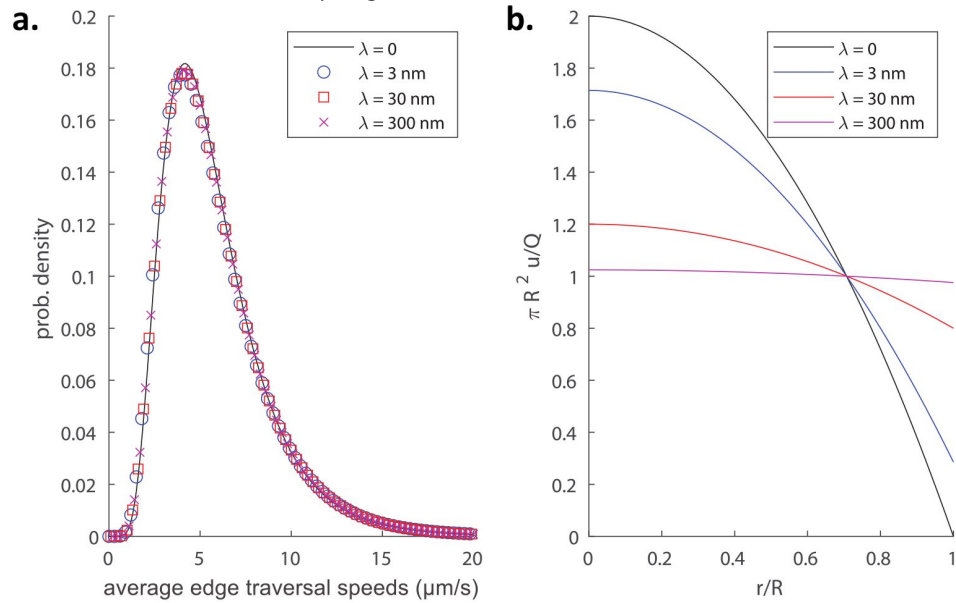
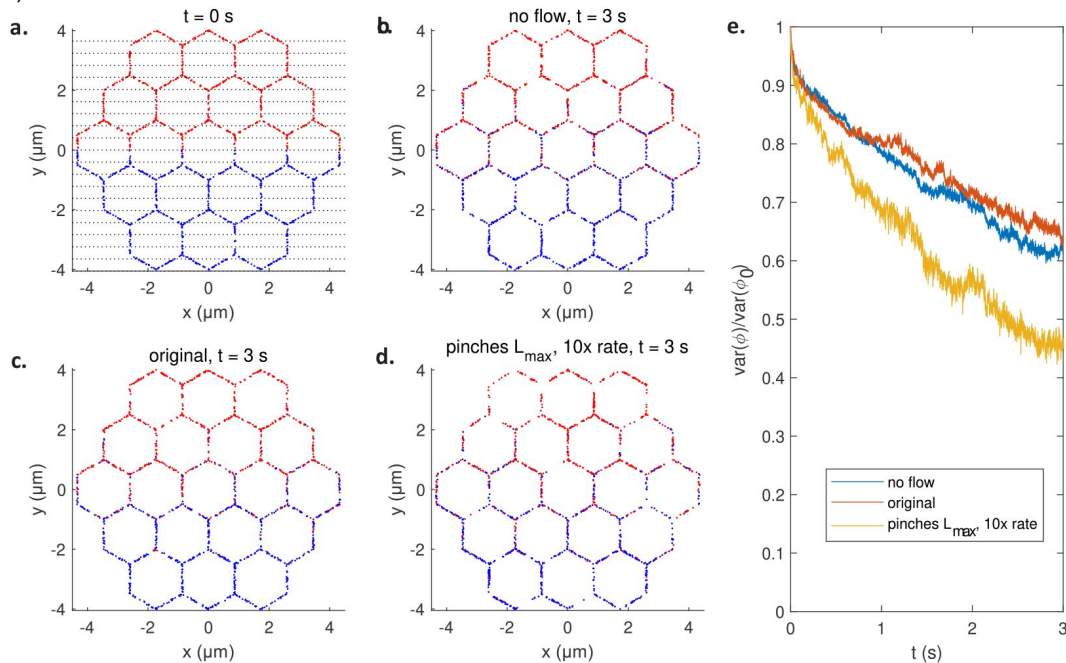


FIG 4

Mixing by active pinching flows. **a.** Initial configuration of blue and red particles in honeycomb network. The strips used to quantify mixing are illustrated in black dotted line. **b-d.** The configuration after $t = 3$ s of mixing in a passive network with no flow (b), an active network pinching with the original pinch parameters (c), and an active network pinching with maximally long pinches at 10 times the original rates (d). **e.** The measure of mixing $\text{Var}(\phi(t))$ against t for the passive network (blue), the network pinching with the original parameters (red), and the network pinching with maximally long and 10x faster pinches (yellow).



Using the experimentally-measured average value of the pinch length $2L = 0.14 \mu\text{m}$ [11], a typical pinch can then propel a particle by a maximum distance of $\Delta z_{\text{max}} \approx 0.19 \mu\text{m}$.

This may, equivalently, be framed in terms of velocities. A transported particle experiences an average velocity during the contraction of at most $V_{\text{max}} = 8L/3T$, where T is the duration of a contraction or a relaxation. Using the pinch length as above and the average values of $2T = 0.213 \text{ s}$ [11] this leads to the estimate $V_{\text{max}} \approx 3.9 \mu\text{m/s}$, which is an order of magnitude smaller than the measured typical edge traversal speed of $\sim 45 \mu\text{m/s}$, consistent with the order of magnitude difference between the measurements and the predictions of the computational model.

Note that this theoretical argument relies solely on the magnitude of fluid volumes expelled out of (or driven into) the pinching regions. These volumes are unaffected by the boundary conditions at the tubule walls because the presence of a non-zero slip length only changes the shape of the flow profile and not the volume fluxes (see Fig. 3); any potential slip is thus inconsequential for averaged measures of particle transport.

D. Marginal addition of coordinated contractility to luminal transport

The theoretical upper bound in the previous section for the maximum luminal transport producible by an individual pinch is realisable only in the hypothetical situation where the flow generated by the pinch is all directed to one end of the tubule i.e. when the other end is effectively blocked. However, content transport produced during the contraction of a single tubule would then be reversed when the tubule relaxes back to its original state, with a single pinch site expected to exhibit only reciprocal (i.e. time-reversible) motions. Any advection contributing to edge traversals must thus be dominated by non-reciprocal motions of multiple pinches resulting in net displacements of solute particles.

The simplest system capable of producing non-reciprocal motions consists of two pinches, and the optimal sequence of motions to maximise the resulting advective particle displacement is illustrated in Fig. 5. We show in Methods (SIV I 2) that this is indeed the optimal two-pinch coordination, which results in a time-averaged displacement equal to the upper bound derived in Eq. (1). Since this optimal sequence of motions involves one pinch site starting a pinch halfway through the pinching of the other site, it is reasonable to estimate its duration as $3T$, and therefore an average particle speed of $8L/9T \approx 1.3 \mu\text{m/s}$. The low particle speed achievable by the optimal coordination between two pinches suggests that a very high level of coordination among multiple tens of pinches per tubule would be required to reproduce the measured edge traversals.

E. A combination of high frequency and pinch length is required to replicate experimental particle speeds

Since the magnitude of ER contractility suggested by microscopy [11] (pinch lengths and frequency) does not explain the measured speeds, we set out to explore different sets of parameters that may generate particle velocities closer to the experimental measurements. The currently achievable imaging spatiotemporal resolution limits the detection of tubular diameter contractility by microscopy. Therefore, it is reasonable to postulate that the relevant parameters may have been underestimated. We simulate ER transport varying individually or in combination the values of pinch duration $2T$, waiting time T_{wait} between successive pinches on a tubule, and pinch length $2L$.

We first decrease both the original [11] values of T and T_{wait} by the same factor of $1/\alpha$, where $\alpha \geq 1$, and simulated particle transport in the honeycomb network (Fig. 6a). In effect, this simply ‘fast-forwards’ the flows in the original active network by a factor of α , and Brownian particles of

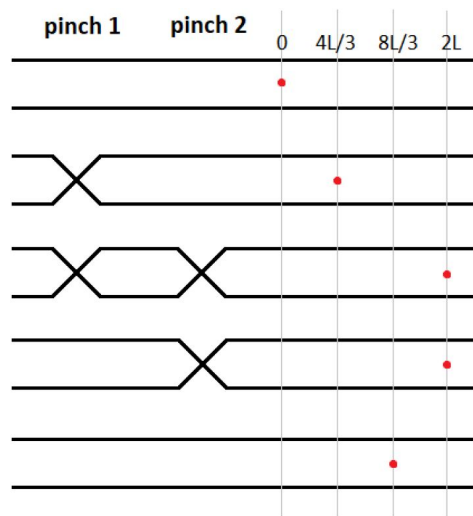


FIG 5

Illustration of coordination mechanism allowing the interactions between two pinch in series to induce the net transport of a suspended particle; the mechanism is akin to small-scale peristalsis.

the original diffusivity are released into this sped-up flow. Instantaneous and edge traversal speeds exhibited corresponding increases when we increased the value of α (Fig. 6a). An extreme value of $\alpha = 100$ produces an average edge traversal speed distribution that peaks at around 8 $\mu\text{m/s}$ (Fig. 6a). Similar results are observed in the C0 network from a COS-7 cell (Fig. 6b). The longer tails of these distributions (compared to those from the honeycomb network) result from the variation in edge lengths in the real network, with shorter edges, across which edge traversals are correspondingly fast, contributing to the tails.

These results suggest that, in order to produce average edge traversal speeds of the same order as the experimental values, we would need an active network sped up by an unrealistic factor considerably greater than 100, probably on the order of $\alpha \sim O(10^3)$ or higher and corresponding to multiple thousands of pinches occurring on average per second on each tubule. Similarly, it took an extreme increase in pinch site size spanning the entire length of an average tubule, only to yield an average speed of $\sim 10 \mu\text{m/s}$ (Fig. 6d).

Next, we attempt to obtain a better fit to experimental data by combining changes in both the pinches' time and geometry parameters. In Fig. 6e-f these maximally long pinches are sped up by a factor of $\alpha = 5$ and 10 respectively, which yields speeds averaging around 30 $\mu\text{m/s}$ and above 60 $\mu\text{m/s}$ respectively. Notably, the tail of the speeds distribution appear longer than that seen in the experiments.

F. Luminal transport kinetics derived from contractile ER tubular junctions and sheets

As shown above, establishing effective transport in a tubular constrictions-driven model based on realistic ER fluid dynamics requires a set of questionable assumptions, compelling us to explore alternatives. Thus, we set out to investigate how ER luminal transport would be impacted by the contractility of its structural components with volumes larger than tubules: (i) the tubular junctions (Fig. 1c), (ii) the perinuclear ER sheets (Fig. 1f) and (iii) the peripheral sheets (Fig. 1d).

First, we run numerical simulations of transport driven by contracting junctions on an ER network (C1 from Fig. 9d; sketch of junctions in Fig. 1c). Since junctions contracting at the tubular pinch temporal parameters measured experimentally yielded inadequate transport, we consider contractions/relaxations with duration $2T$ exponentially distributed with a mean of α^{-1} times the original value in Ref. [11] and the waiting time T_{wait} between subsequent contractions/relaxations exponentially distributed with a mean β^{-1} times the original value (i.e. values of $\alpha > 1$ and $\beta > 1$ reflecting faster and more frequent pinches). Naturally, the results depend on the choice of the volume ΔV expelled by a junction during each contraction. Using fluorescence microscopy images, we may estimate the volume in junctions (see Methods, § IV J 1). We assume that the junction volumes are drawn from a normal distribution with the same mean and standard deviation as our data set i.e. the distribution $N(0.0045 \mu\text{m}^3, 0.0021 \mu\text{m}^3)$. Volumes greater than the maximum value in our experimental estimate ($0.0081 \mu\text{m}^3$) or less than the minimum value ($0.0020 \mu\text{m}^3$) are rejected.

We show the results in Fig. 7a. The thick solid line illustrates a set of values of (α, β) which produces distributions of average edge traversal speeds with means similar to the experimental values in Ref. [11], and the dashed lines one standard deviation away. We are interested in values of (α, β) close to unity because this corresponds to junctions which pinch with similar pinch durations and frequencies as the experimentally observed tubule pinches and are therefore biologically plausible; $(\alpha, \beta) \approx (2.5, 2)$ is the closest pair on this line to unity. However, only for $\alpha \approx 1$ we obtained average edge traversal speed distributions of reasonable shapes (i.e. approximately Gaussian), which would require a large $\beta = 5$ to match experimental results quantitatively.

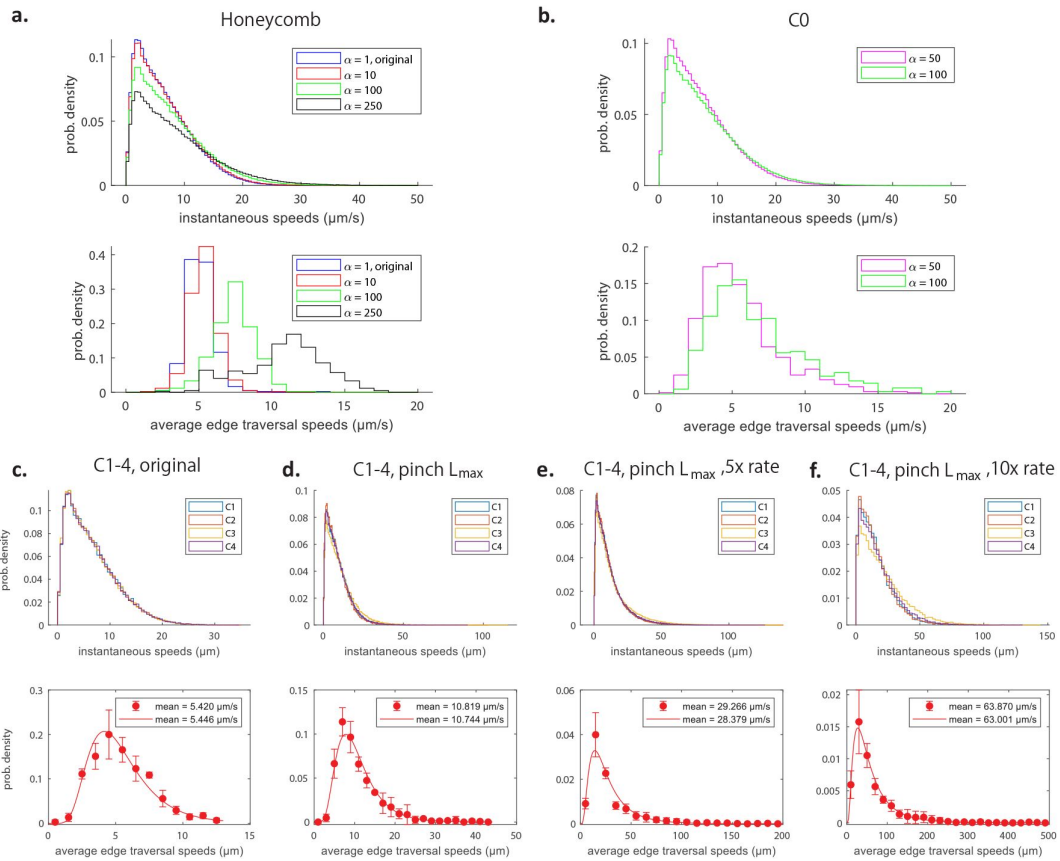


FIG 6

Histograms of instantaneous speeds (top) and average edge traversal speeds (bottom), for **a-b.** an active honeycomb network (a) and the reconstructed C0 network from Fig. 9a-c (b) with pinch parameters \overline{T} and $\overline{T}_{\text{wait}}$ decreased to $1/\alpha$ times the original values from Ref. [11], and the same measured diffusivity $D = 0.6 \mu\text{m}^2\text{s}^{-1}$, and for **c-f.** the C1-4 networks from Fig. 9d with varying pinch parameters: original parameters from Ref. [11] (c); pinch length increased to the total length of the tubules (d); a five-fold increase in the rate of pinching and pinch length set to the total length of the tubules (e); a ten-fold increase in the rate of pinching and pinch length set to the total length of the tubules (e). Bottom rows: points indicate mean \pm one standard deviation over the four networks (C1-C4) of normalised frequencies in each speed range; curves are log-normal distributions fitted to all average edge traversal speeds for each set of pinch parameters; insets show means of original simulation results and of fitted distributions.

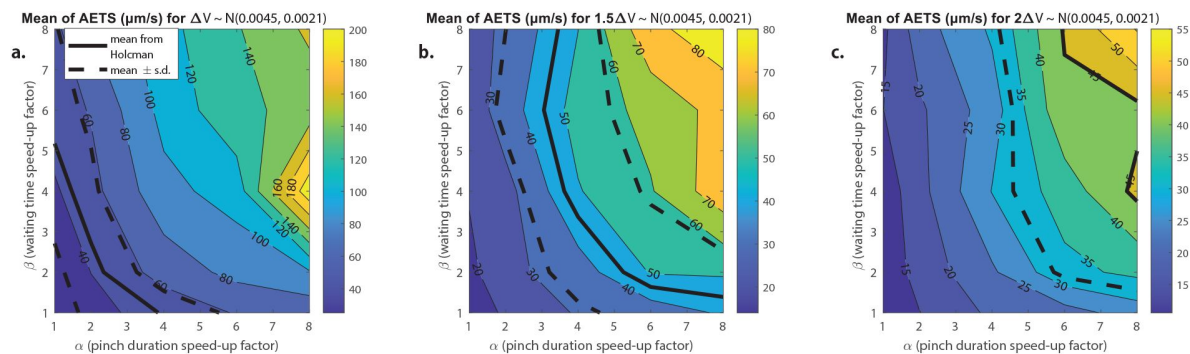


FIG 7

Contour plots of the mean values of the average edge traversal speeds obtained from simulations of our model in a junction- and tubules-driven C1 network from Fig. 9 with different values of (α , β) and with contraction volumes ΔV expelled during each contraction drawn from: **a.** the normal distribution estimated for the junction volumes $N(0.0045, 0.0021)$ (in μm^3); **b.** two thirds the estimated normal distribution for the junction volume; and **c.** half the estimated distribution for the junction volume. Thick solid black lines indicate the mean of the average edge traversal speed distribution reported in Ref. [11] (45.01 $\mu\text{m/s}$) and thick dotted black lines indicate mean \pm standard deviation (45.01 \pm 12.75 $\mu\text{m/s}$).

Further, the assumption that the entire junction volume is expelled during a contraction may not be realistic, as it would require extreme bending/extension of tubule walls and the ability of the entire junction to empty and fill out during each contraction. Reducing the volume ΔV expelled in each contraction to two-thirds of the estimated distribution of the junction's volume (results shown in [Fig. 7b](#)) or to half ([Fig. 7c](#)) causes the average edge traversal speeds to drop considerably. The lower the proportion of the junction volume expelled during a contraction, the faster the pinches are required to be (i.e. large value of α) and the larger the frequencies of the pinch events (large β) in order to produce reasonably high average edge traversal speeds.

Next, we consider the particle transport generated by two types of ER sheets contracting and relaxing over a duration $2T$ (see Methods for details). The perinuclear sheets are shaped as contiguous layers of flat cisternae with a luminal volume larger than the tubules branching from these structures (see sketch in [Fig. 1f](#)). Accordingly, their contraction with $2T = 5$ s and $V_{sheet} = 10 \mu\text{m}^3$ yields a mean average traversal speed of $35 \mu\text{m/s}$ consistent with the single particle tracking experiments (see [Fig. 8b](#)). However, the speeds distribution tails towards higher values ([Fig. 8a-b](#)), something that has not been observed experimentally so far; it may be that high velocities cannot be recovered in experiments due to the constraints on linkage distance imposed to ensure trajectory fidelity in particle tracking.

Further, our simulations reveal that the flow decays sharply with distance away from the sheet where it originated as it branches out into tubules. This is illustrated in [Fig. 8c-d](#) and we further quantify the spatial gradient of the average edge traversal speeds across Cartesian 2D coordinates in [Fig. 8e](#), revealing the stark contrast between the homogeneous profile for contracting junctions (red dotted line) vs sheet-driven transport (blue solid line). The short range of influence afforded by contracting perinuclear ER sheets thus argues against its ability to sustain mixing flows and fast particle transport on the distal tubular network.

Instead, we explore whether the peripheral sheets (i.e. the smaller flat inter-tubular ER regions, see sketch in [Fig. 1d](#)) may overcome the range limit. The peripheral sheets have volumes significantly larger than tubules and junctions, which we estimated at $0.12 \mu\text{m}^3 \pm 0.04 \mu\text{m}^3$ (see [Fig. 13](#) and Methods §IV J 4 for details). This suggests that the peripheral sheets could produce average edge traversal speeds compatible with experimental measurements. Assuming that a sheet typically occupies the area enclosed by a 'triangle' of tubules, we may incorporate the transport inside a sheet-driven network using our model for contracting junctions (also referred to as 'nodes' in our graph theoretical methodology), but with junction volumes set to the measured sheet volumes (see §IV J 4 for details) and with either (i) each node expelling one third of the volume expelled by a contracting sheet (since a peripheral sheet is in contact with three nodes on average), or (ii) a contracting node expelling the entire volume expelled by a contracting sheet, but with only one-third of the junctions actively contracting at any one time. Further assuming that during each contraction a peripheral sheet expels half its total volume so that in simulation (i) node k expels a volume $V_k/6$ in each contraction and in simulation (ii) each active node k expels a volume $V_k/2$, nodes which contract at rates $\alpha^{-1} = 2.5$ and $\alpha^{-1} = 5$ times slower than the tubule pinches in Ref. [11] in simulations (i) and (ii) respectively give average edge traversal speeds in the correct range of $40 \mu\text{m/s}$ ([Fig. 8f-g](#)). The contraction of peripheral sheets may thus be offered as a plausible mechanism for fast luminal transport, provided they are able to contract with sufficiently high rates.

Further, by relating the work done by a peripheral sheet contraction to the dissipation due to the flows induced inside the sheet and in the rest of the network, the energetic cost of one such contraction may be estimated to be of the order of 1000 molecules of ATP (see Methods §IV K for details). For reference, a kinesin motor protein uses one molecule of ATP to move 8 nm [17, 18], whereas a muscle fibre consumes hundreds of thousands of ATP per second [19]. These

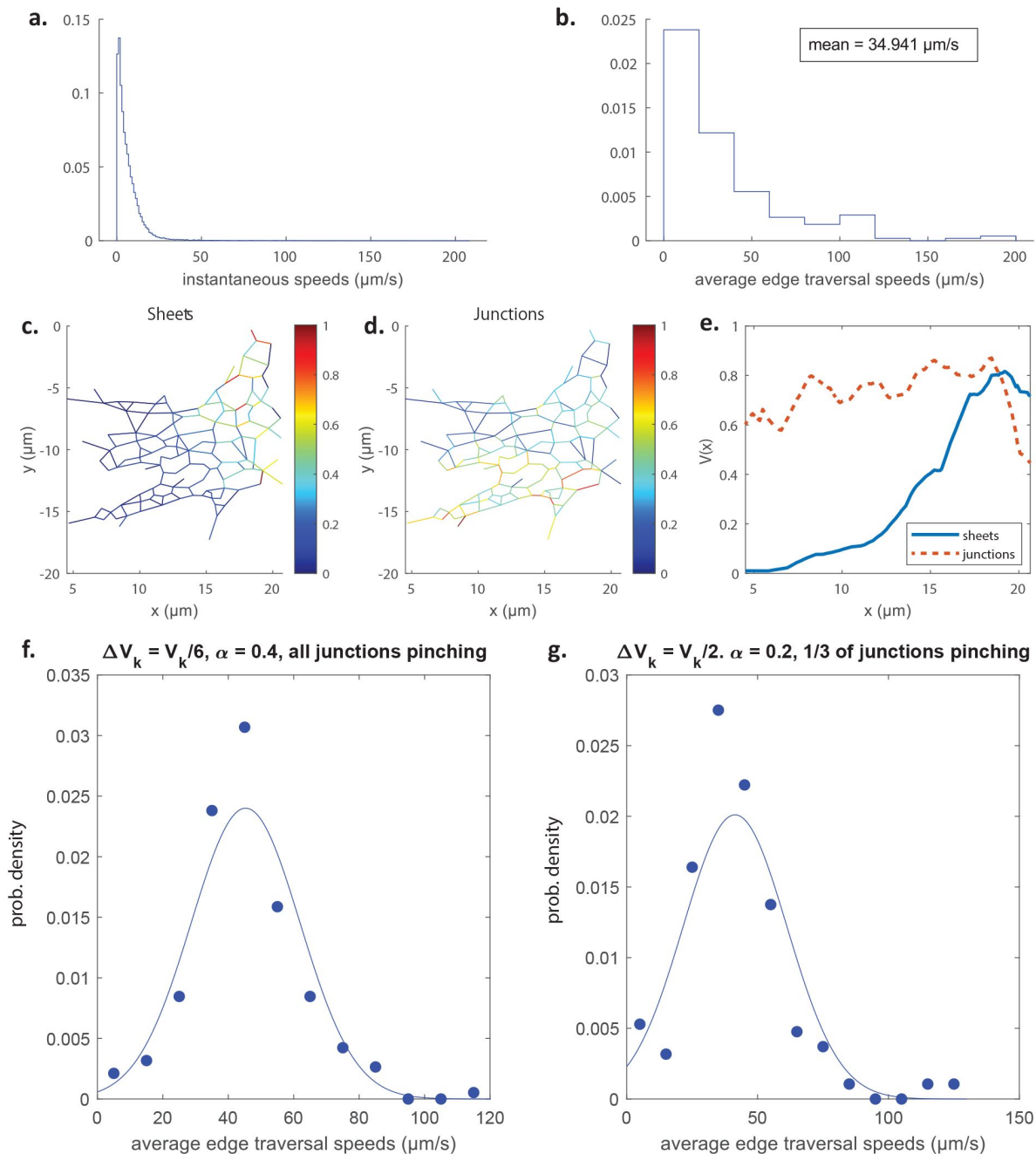


FIG 8

text on the next page FIG. 8: **a-b.** Distributions of instantaneous speeds (a), and average edge traversal speeds (b) obtained from simulations of the C1 network from Fig. 9 driven by the contraction of a perinuclear sheet. In these simulations the sheet undergoes one contraction+relaxation lasting $2T = 5$ s, and expels a volume $V_{\text{sheet}} = 10 \mu\text{m}^3$ of fluid during a contraction. **c-d.** Colour maps of normalised average edge traversal speeds obtained from simulations of the C1 network from Fig. 9 driven by contraction of tubules + sheets (c) and junctions + tubules (d) respectively. **e.** The speeds averaged along the y direction of the network, $V(x)$, are plotted against x , to effectively project the information onto one dimension from c. (blue solid line) and d. (red dashed line). **f-g.** Histograms of average edge traversal speeds (dots) and normal fits (lines) and mean AETS (inset) in C1 networks with parameters adjusted as follows to approximate a network with peripheral sheets: Junction k expels a volume $V_k/6$ of fluid in each pinch, the pinches are $\alpha^{-1} = 2.5$ times slower than the original tubule pinches, and all nodes actively pinch (f); and node k expels a volume $V_k/2$ of fluid in each pinch, the pinches are $\alpha^{-1} = 5$ times slower than the original tubule pinches, and only a third of the nodes actively pinch (g).

peripheral sheet contractions may be directly ATP-driven, or they might come as a result of other mechanical processes in the cell, similar to mechanisms generating cytoplasmic mixing flow [20–22].

III. Discussion

A better understanding of the interplay between ER structure and function via luminal transport speeds may hold clues to explaining the sensitivity of cells with extensive projections, such as sensory and motor neurons, to defects in ER shaping proteins. It is tempting to speculate that disturbed ER luminal transport, the kinetics of which is particularly important for communication across vast axonal lengths, underlies selective vulnerability of long neurons.

The motion of solutes in cellular compartments is now understood to be facilitated by active components. This is evident from direct motion measurements and the dependence of motion speed on the availability of ATP-contained energy [10, 11, 23, 24]. The origin of these active driving forces is, however, challenging to identify. The cytoplasm's currents are often believed to originate from the motion of large complexes such as ribosomes and large vesicle cargo shuttled by cytoskeleton-mediated motorised transport [24]. In the case of enhanced transport in the lumen of the ER tubules, the contractility of tubules has been suggested as the flow generating mechanism, and indeed such tubule deformations have been observed in microscopy [11]. However, establishing a direct empirical link between tubule contraction and active flows, or experimentally testing other hypotheses for the driving mechanism behind ER solute transport, remain currently unattainable. In this study, we thus propose a physical modelling approach, which provides a platform to explore the nanofluidics behaviour of biological systems such as the ER network. The outcomes of our simulations for a contractile ER argue against the plausibility of local pinch-driven flow; pinches with frequency and size on the order of those estimated by microscopy yield significantly lower speeds than single particle tracking measurements, as well as no enhancement of mixing beyond that from passive diffusion. The deficit stems from the fact that the displaced fluid volume upon local contraction is too small to generate sufficient particle transport.

Given the uncertainty of the empirical measurements for ER tubule deformation, due to the limits in the spatio-temporal resolution of organelle structure imaging, the pinch parameters may have been significantly underestimated. This sanctioned exploring a wider range of spatio-temporal parameters in our simulations, which revealed that a combination of a higher frequency with a much larger pinch length may provide higher particle speeds that are comparable to the single particle tracking measurements. Further, our modelling results suggest the possibility of transport by luminal width contractions of larger volume ER subdomains (which are contiguously interconnected with the network). In that respect, the contraction of peripheral (i.e. inter-tubular) sheets, in particular yields speed values in a plausible range provided they are able to contract fast enough. In contrast, the contraction of large-volume perinuclear sheets leads to fast transport but with a limited spatial range and with flows that would not impact transport beyond a few microns into the peripheral network. Similarly, the alternative scenario of contractility of tubular junctions appears unlikely as particle speeds similar to experiments could only appear for junctions pinching at up to 8 times faster than experimentally observed contracting tubules.

The modelling approach in this study, although focused on the ER network, provides a step forward towards understanding intra-organellar fluid dynamics. Our simulation results have been used to rule out several scenarios, which seemed physically intuitive but are nevertheless unable to explain the observed enhanced luminal transport. Furthermore, our results generated a set of potentially testable predictions that can be used to validate or refute each of the envisaged transport mechanisms. For example, as fluid expulsion from peripheral sheets appears to be in broad agreement with single particle tracking measurements data under even conservative

assumptions, future measurements may explore whether an active luminal motion is more pronounced and faster in proximity to peripheral sheets. Moreover, a set of improved spatio-temporal resolution measurements of particle tracking and structural contractions will be needed to complete the physical picture of ER luminal transport.

While our study allowed us to test different plausible scenarios, questions remain open as to the force generation mechanisms responsible for the observed pinching dynamics. We have estimated in §IV H that forces on the order of 30 pN would be required to periodically contract the tubules as seen empirically. The force exerted by a single molecular motor has been estimated to be on the order of 6 pN [25], so the required forces for pinching may be provided by several motors working together [26]. Recently discovered hydro-osmotic instabilities could also contribute to shape fluctuations and pinching, although they are predicted to have much longer wavelengths than the typical size of a pinching region [27]. In contrast, the mechanisms involving topological remodelling of the ER, such as the well-documented process of ring closure [28], occur over timescales of minutes and therefore cannot account for the millisecond-scale transport measured here.

We have used *in silico* fluidics modelling for our conclusions, particularly in identifying new physically permitted mechanisms of luminal propulsion, and our simulations should be regarded as theoretical predictions demonstrating physical plausibility rather than mere speculation. We have explored theoretically the consequences of structural fluctuations which presumably do take place. Fluctuations in width of the flat ER areas, in particular, are expected since the structures appear dynamic in live light microscopy and narrowing/extension points are observable in electron microscopy [29, 30]. Further, variability in the areas of flat ER that are observable in electron microscopy can be explained by capturing the structures in different states of fluctuations. It should be expected that the mobile elastic structure such as ER sheets would not exhibit rigidity required to prohibit fluctuations.

In conclusion, it is worth emphasising that our *in silico* fluid dynamical modelling reveals that for structural fluctuation-based mechanisms to facilitate luminal motion, assumptions currently not supported by empirical data are required. This warrants explorations of alternative mechanisms for ER luminal transport, for example anomalous diffusion driven by the fluctuations of macromolecular complexes [24] or by osmotic forces, as previously suggested [11].

IV. Methods

Here we describe the mathematical and physical model for the fluid mechanics and transport driven by active contractions in the ER. This requires the introduction of a network model for the geometry of the ER (§IV A) and individual pinches (§IV B) and a framework for the hydrodynamics of pinching tubules (§IV C). Our solution method for the flows inside our network is then described in §IV D. From simulations of Brownian particles advected by these flows (§IV E) quantitative measures of particle transport (§IV F) are extracted for comparison with experiment. Boundary slip is incorporated into our model in §IV G. The force required to pinch a tubule is estimated in §IV H. In §IV I we present in detail the derivations of the theoretical results discussed in §II C (transport upper bound by a single pinch) and §II D (coordination of pinches). Finally, modifications of our model to explore alternative flow generation mechanisms are discussed in §IV J, and the energetic cost in contracting a peripheral sheet is estimated in §IV K.

A. Network modelling

We represent the ‘skeleton’ of a two-dimensional ER network as a planar graph with each node assigned a position $\mathbf{x} \in \mathbb{R}^2$. Given an edge of the network labelled (i, j) and of length $|\mathbf{x}_i - \mathbf{x}_j| = l$, we model the lumen of the corresponding tubule to occupy a cylinder of radius R whose axis lies

along the edge and has length l . This assumption avoids the intrinsic difficulty in defining a precise boundary between a tubule and a tubular junction, as well as leading to a simplified model of the intra-nodal dynamics of a solute particle (see below); since the tubules are long compared to the size of the junctions, the impact of their small overlap can be safely neglected.

We mathematically reconstruct a model ER network, which we refer to as C0, using the skeleton image of the COS7 ER network given in [Fig. 4](#) of the Supplementary Material from Ref. [11]; this network is reproduced in [Fig. 9a](#). We use the multi-point tool in ImageJ [31] to place numbered points at the positions of the nodes on the source skeleton image, and then obtain a list of the indices and position coordinates of each node. The edges are then manually tabulated as a list of pairs of nodes; this gives us all the information required to construct a mathematical graph as shown in [Fig. 9b](#), with the original network superimposed on the mathematical model in [Fig. 9c](#). Note that in what follows we work with the largest connected component of the source skeleton image in order to study transport in a fully connected network. We also use the same procedure to extract the graph structures from microscopy images, of four smaller ER networks which we label C1-C4 (original network with mathematical graph superimposed in [Fig. 9d](#)). In [Fig. 9e](#), we show the distributions of the edge (tubule) lengths in each of the C0-C4 networks, as well as the mean edge lengths, the mean degrees (the degree of a node is the number of edges connected to it), and the number of nodes. The mean edge lengths are around 1 μm and mean degrees are approximately 3. In order to compare the biological network to an idealised ER system, we also consider a honeycomb network, i.e. one where every node (apart from those at the boundaries) has a degree of 3, with all edge lengths exactly 1 μm .

B. Pinch modelling

To describe the pinches ([Fig. 1e](#)), we consider a model where the kinematics of each pinch is fully prescribed in time. We therefore assume that the active biochemical forces responsible for the deformation of the tubules balance with the elastic resistance of the tubules and with the dissipative forces in the fluid in such a way that the pinches occur as described.

The geometrical model for a pinch is illustrated in [Fig. 10](#). Each tubule is assumed to have a pinch site at its midpoint (i.e. with $L_1 = L_2$); we make this simplifying assumption in our simulations, after verifying that more general pinch locations ($L_1 \neq L_2$) have virtually no effect on particle transport. The pinching events occur at the pinch sites stochastically and independently of each other. Each pinch is defined geometrically by three parameters from a random distribution (see below): (i) the duration of a pinch $2T$, (ii) the time T_{wait} between the end of a pinch and the beginning of a new one on the same site, and (iii) the length of a pinch $2L$ (see [Fig. 10](#)). We assume for simplicity that all pinches are axisymmetric so that using the notation of [Fig. 10](#), each tubule remains a cylinder of time-varying radius denoted by $r = a(z, t)$. Pinches are assumed to have reflectional symmetry about the plane in the cross-section through the centre of the pinch (i.e. [Fig. 10](#) each pinch is characterised by the same length L on either side of it). The total length of a tubule is denoted by $l = L_1 + 2L + L_2$, so the portion before the pinch has length L_1 , and that after the pinch is of length L_2 .

We model the geometrical profile of each pinch of length $2L$ as following a linear radius change (see [Fig. 10](#)). Within a pinch located at $z = z_0$, the radius of the cylinder is therefore given by

$$a(z, t) = b(t) + [R - b(t)] \frac{|z - z_0|}{L}, \quad -L \leq z - z_0 \leq L. \quad (2)$$

The time-varying function $b(t) \leq R$ is therefore the minimum pinch radius in the centre of the tubule. As the simplest modelling choice, we assume in our simulations that b changes in time sinusoidally and thus will use $b(t) = (R + b_0)/2 + (R - b_0) \cos(\pi t/T)/2$, where t is time after the pinch begins and b_0 is the value of b halfway in time through the pinch. Choosing a smooth time

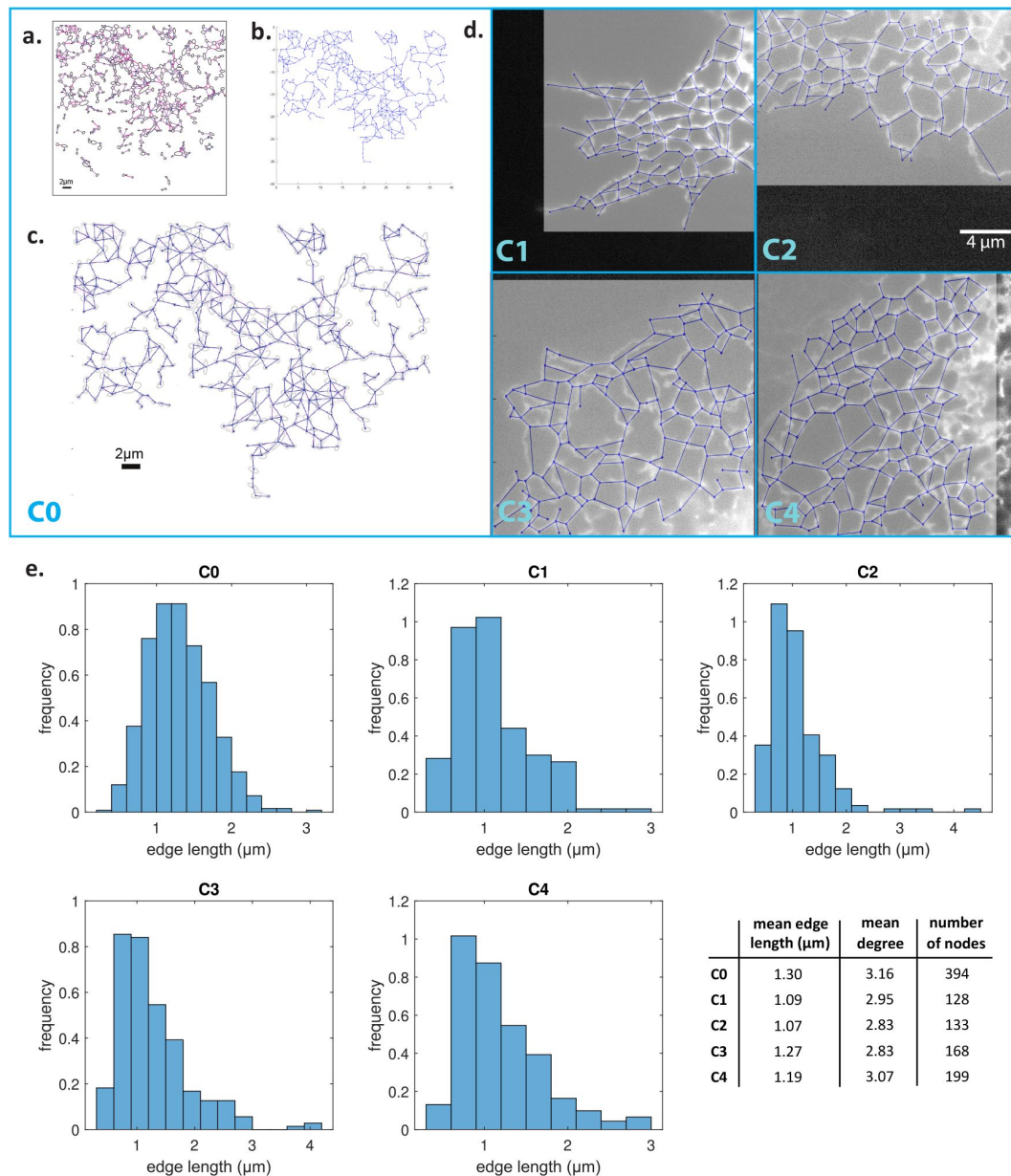


FIG 9

a. Skeleton image of COS7 ER reproduced from Ref. [11]. **b.** Model ER graph (blue solid lines) reconstructed from (a) using ImageJ. **c.** Experimental images in (a) superimposed with mathematical model from (b). **d.** Microscopy images of four different COS7 ER networks (labelled C1-C4) with reconstructed model networks (blue solid lines) superimposed. **e.** Distributions of edge lengths in the C0-C4 networks. Bottom right: mean edge lengths, mean degrees (i.e. number of edges connected to a node) and number of nodes of the C0-C4 networks.

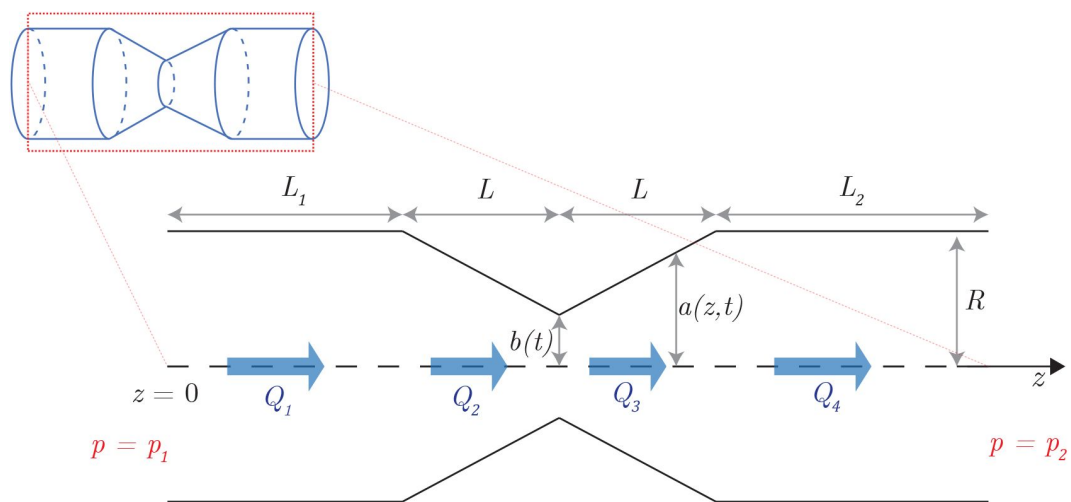


FIG 10

Mathematical model of a pinching tubule. The tubule has a radius of R outside the pinch, $a(z, t)$ in the pinch (where z is the axial coordinate), and $b(t)$ at its narrowest point i.e. the centre of the pinch. The portion of the tubule before the tubule has length L_1 while that after has length L_2 ; the pinch is symmetric and has a length $2L$. Q_1 , Q_2 , Q_3 , and Q_4 denote the volume fluxes through the tubule in the four different regions as indicated. The pressures at the end of the tubule are $p = p_1$ at $z = 0$ and $p = p_2$ at $z = L_1 + 2L + L_2$.

variation for the function $b(t)$ will ensure the continuity of fluxes in time (see **Eq. (10)** later). We have verified that changing the pinch shape to a smoother geometry has essentially no impact on the fluid volume expelled/taken in, and therefore no significant effect on the flows/transport.

In our simulations the stochastic pinch parameters are drawn from the distributions measured in Ref. [11]. The pinch duration $2T$ is therefore drawn from an exponential distribution with rate parameter $\lambda = \ln 10/0.167 \text{ s}^{-1}$ (so the mean value is $\overline{2T} = 0.0725 \text{ s}$), the time between pinches T_{wait} from an exponential distribution with rate parameter $\lambda_{\text{wait}} = \ln 10/0.851 \text{ s}^{-1}$ (mean value $\overline{T_{\text{wait}}} = 0.370 \text{ s}$) and the pinch length $2L$ from a uniform distribution with mean $\mu = 0.12 \text{ }\mu\text{m}$ and variance $\sigma^2 = (0.06^2/\ln 10) \text{ }\mu\text{m}^2 \approx (0.040 \text{ }\mu\text{m})^2$. Throughout we set the tubule radius $R = 30 \text{ nm}$ and $b_0 = 0.01R$ (recall from **Fig. 10**).

C. Hydrodynamic modelling

1. Hydrodynamics of network

We assume that the fluid occupying the ER network is Newtonian. Flow inside the network occurs at low Reynolds number, which can be justified as follows. From experiments in Ref. [11], we know that velocity scale relevant to ER flows is of the order $U \sim 10^{-5} \text{ ms}^{-1}$. With a typical tubule radius $R \approx 10^{-8} \text{ m}$ and a kinematic viscosity of at least that of water $\nu \approx 10^{-6} \text{ m}^2 \text{ s}^{-1}$, we obtain a Reynolds number of the order $\text{Re} = UR/\nu \sim 10^{-7}$, so the flow is indeed Stokesian and inertial effects in the fluid can be safely neglected.

At a typical instance in time, a tubule undergoing contraction (or relaxation) causes a net volume flux to exit (or enter) the corresponding tubule. In the context of our graph theoretical model, we therefore model each pinch site as a ‘pinch node’ generating a net hydrodynamic source/sink whenever the tubule contracts/relaxes.

However, since it is not guaranteed that the total volume created by all pinching events always adds up to zero, we need a mechanism for the corresponding net volume to exit, or enter, the network. We achieve this through a number of ‘exit nodes’ that allow mass to be globally conserved. We locate the exit nodes at the exterior of the network and choose their number randomly. From a hydrodynamic standpoint, we impose the pressure condition $p = p_0$ at each exit node to model their connection to a large fluid reservoir.

We numerically tested the robustness of our results to the details of the exit nodes by repeating simulations with different configurations. The exact choices of exit nodes turn out to not affect the transport results shown below provided there are sufficiently many of them to avoid channeling the entire network’s worth of pinch-induced flow into a few tubules towards the exterior, thereby producing artificially strong flows.

2. Hydrodynamic model for a pinch

a. Flow rate

The velocity field in a straight cylindrical tubule at low Reynolds number is the classical parabolic Poiseuille flow [32]. When integrated over a cross section of the tubule, this flow yields the Hagen-Poiseuille law relating the pressure change Δp across a length l of a tubule to the a net volume flux Q in the positive axial direction,

$$\Delta p = -\frac{8\mu l}{\pi R^4}Q, \quad (3)$$

where μ is the dynamic viscosity of the Newtonian fluid. Note that when $Q > 0$ our notation leads to $\Delta p < 0$, meaning that the pressure decreases across the length of the channel.

The result in Eq. (3) is valid for a straight (i.e. not pinching) tubule, and we need to generalise it to the case of a pinching tubule. Consider first a more general axisymmetric pipe whose radius $a(z, t)$ varies with axial position z and time. We may use the long-wavelength (lubrication) solution to Stokes' equations for the streamwise velocity $u(z, r, t)$ and flux $Q(z, t)$ inside such a pipe into which a flux $Q_1(t)$ enters at $z = 0$ [33],

$$u(z, r, t) = 2 \frac{Q(z, t)}{\pi a(z, t)^2} \left[1 - \left(\frac{r}{a(z, t)} \right)^2 \right], \quad (4)$$

Where

$$Q(z, t) = Q_1(t) - 2\pi \int_0^z a(\tilde{z}, t) \frac{\partial a(\tilde{z}, t)}{\partial t} d\tilde{z}. \quad (5)$$

The equality in Eq. (5) can be derived using an intuitive mass conservation argument, independently of the inspired ansatz in Eq. (4). Conservation of mass inside a small section $[z, z + \delta z]$ of the cylinder requires $Q(z) - Q(z + \delta z) = 2\pi a \dot{a} \delta z + \mathcal{O}(\delta z^2)$. Considering the limit $\delta z \rightarrow 0$ and integrating the resulting expression for $\partial Q / \partial z$ from 0 to z yields Eq. (5).

In order for the no-slip boundary conditions at $r = a(z, t)$ to be satisfied, and also to satisfy the incompressibility condition $\nabla \cdot \mathbf{u} = 0$, the radial component of the velocity, $v(z, r, t)$, is necessarily non-zero and given by [33]

$$v(z, r, t) = \frac{\partial a(z, t)}{\partial t} \frac{r}{a(z, t)} \left[2 - \left(\frac{r}{a(z, t)} \right)^2 \right] + 2 \frac{\partial a(z, t)}{\partial z} \frac{Q(z, t) r}{\pi a(z, t)^3} \left[1 - \left(\frac{r}{a(z, t)} \right)^2 \right]. \quad (6)$$

Our geometrical model for each pinch in §IV B yields straightforwardly a piecewise linear expression for $a(z, t)$ in different regions of the tubule, with the time dependence entering only through the value of the pinch radius $b(t)$. Denoting by Q_i ($1 \leq i \leq 4$) the fluxes in the four regions of the pinched tubules shown in Fig. 10, we may substitute the linear shape functions into Eq. (5) and obtain

$$Q_2 = Q_1 - \frac{2\pi \dot{b}(z - L_1)^2}{L} \left(\frac{R}{2} - \frac{(R - b)(z - L_1)}{3L} \right), \quad (7)$$

$$Q_3 = Q_1 - 2\pi \dot{b}L \left(\frac{R}{6} + \frac{b}{3} \right) - 2\pi \dot{b}[z - (L_1 + L)] \left\{ b + \frac{R - 2b}{2L}[z - (L_1 + L)] - \frac{R - b}{3L^2}[z - (L_1 + L)]^2 \right\}, \quad (8)$$

$$Q_4 = Q_1 - 2\pi \dot{b}L \left(\frac{R}{3} + \frac{2b}{3} \right). \quad (9)$$

Note that the final expression may be rearranged as

$$Q_4 - Q_1 = -2\pi \dot{b}L \left(\frac{R}{3} + \frac{2b}{3} \right), \quad (10)$$

which may be interpreted as the instantaneous volume source/sink during a contraction/relaxation at a pinch site.

b. Pressure drop

We next need to compute the pressure drop in the pinches. We integrate the z -component of the Stokes equation

$$\frac{\partial p}{\partial z} = \frac{1}{r} \frac{\partial}{\partial r} \left(r \frac{\partial u}{\partial r} \right) + \mu \frac{\partial^2 u}{\partial z^2}, \quad (11)$$

along $0 \leq z \leq L_1 + 2L + L_2$, and use the solution for u , to obtain

$$\Delta p \equiv p_2 - p_1 = -\frac{8\mu}{\pi} \int_0^{L_1+2L+L_2} \frac{Q(z, t)}{a(z, t)^4} dz + \mu \frac{\partial u}{\partial z} \Big|_0^{L_1+2L+L_2} \quad (12a)$$

$$\approx \underbrace{-\frac{8\mu}{\pi} \int_0^{L_1+L} \frac{Q(z)}{a(z, t)^4} dz}_{I_1} - \underbrace{\frac{8\mu}{\pi} \int_{L_1+L}^{L_1+2L+L_2} \frac{Q(z)}{a(z, t)^4} dz}_{I_2}. \quad (12b)$$

Here, the second term on the right-hand side of **Eq. (12a)** has vanished because $\partial_z u \propto \partial_z(Q/a^2)$ but Q and a are approximately constant at the entrance and exits of the tubule when the pinch site is sufficiently far from the ends of the tubule so that the flow is fully-developed there.

Using the expression (7) for Q_2 , an integration yields

$$I_1 = \frac{-8\mu Q_1 L_1}{\pi R^4} - \frac{8\mu}{\pi} \left[\frac{L Q_1}{3(R-b)} \left(\frac{1}{b^3} - \frac{1}{R^3} \right) + \int_{L_1}^{L_1+L} \frac{Q_2(z) - Q_1}{a(z, t)^4} dz \right] \quad (13)$$

and, by symmetry,

$$-I_2 = \frac{8\mu Q_4 L_2}{\pi R^4} - \frac{8\mu}{\pi} \left[-\frac{L Q_4}{3(R-b)} \left(\frac{1}{b^3} - \frac{1}{R^3} \right) + \int_{L_1+2L+L_2}^{L_1+L} \frac{-Q_3(z) + Q_4}{a(z, t)^4} dz \right]. \quad (14)$$

Subtracting these two results (and noting the integrals cancel out by symmetry) we obtain the modified Hagen-Poiseuille expression for a pinching tubule as

$$\Delta p = -\frac{8\mu}{\pi} \left[\frac{L_1}{R^4} + \frac{L}{3(R-b)} \left(\frac{1}{b^3} - \frac{1}{R^3} \right) \right] Q_1 - \frac{8\mu}{\pi} \left[\frac{L_2}{R^4} + \frac{L}{3(R-b)} \left(\frac{1}{b^3} - \frac{1}{R^3} \right) \right] Q_4. \quad (15)$$

Note that this relationship is linear in each of Q_1 and Q_4 , and is to be solved alongside **Eq. (10)** to relate the flow rates and pressure drops to the change in size of the pinches. Importantly, the classical Hagen-Poiseuille law is recovered as $b \rightarrow R$ since **Eq. (15)** becomes in that limit

$$\Delta p = -\frac{8\mu(L_1 + 2L + L_2)Q_1}{\pi R^4}, \quad (16)$$

which agrees with **Eq. (3)** when taking $l = L_1 + 2L + L_2$.

D. Solving the hydrodynamic network model

The incorporation of pinches as ‘dummy nodes’ into the graph theoretical framework of §IV A along with [Eqs. \(10\)](#) and [\(15\)](#) for the necessary pinch-related quantities allow us to reduce the problem of determining the time-dependent flows in an active pinching network into the simpler problem of solving at each instant for the instantaneous fluxes inside a ‘passive’ network with newly added nodes, appropriate sources/sinks, and modified pressure drops. Note that since the flows at these sub-cellular scales are inertialess (i.e. Stokes flows), we are able to effectively decouple time from our problem and solve the problem in the quasi-steady limit.

For each edge (i.e. tubule) (i, j) in the network, we define Q_{ij} to be the flow rate from node i to node j , with the sign convention that flow is from i to j if $Q_{ij} > 0$. For mathematical convenience, we define $Q_{ij} = 0$ in all cases where (i, j) is not an edge in the graph. The goal is to solve for the values of the Q_{ij} ’s corresponding to each edge.

After the incorporation of the dummy nodes, we denote by N the number of nodes and E the number of edges. We label the nodes such that $\{1, \dots, M\}$ denotes the M exit nodes. Let q_i be the source or sink carried by the i^{th} node (so that $q_i = 0$ if i is a normal node, q_i is as specified by the RHS of [Eq. \(10\)](#) if i is a pinch node, and q_i is a quantity to be determined if i is an exit node.). Our $M + E$ independent variables are therefore $\{q_i | i = 1, \dots, M\}$ i.e. the sources/sinks carried by the exit nodes, and the Q_{ij} ’s corresponding to each edge. To obtain their values, we employ the viscous hydraulic analogues of Kirchhoff’s Laws.

1. Kirchhoff’s First Law (K1)

The first equation is that mass is conserved at each junction i.e. for each node i we have

$$\sum_j Q_{ij} = q_i, \quad (17)$$

which gives us therefore N equations. Note that these equations together imply global conservation of mass, $\sum_{i=1}^N q_i = 0$.

2. Kirchhoff’s Second Law (K2)

The second equation is a statement of consistency of pressure, namely that the pressure change around any cycle (i.e. closed loop) of the network is zero. Therefore, in a given cycle $C = \{v_1, v_2, \dots, v_n, v_{n+1} = v_1\}$, if $\Delta p_{v_i v_{i+1}}$ denotes the pressure change from node v_i to node v_{i+1} we necessarily have

$$\sum_{i=1}^n \Delta p_{v_i v_{i+1}} = 0. \quad (18)$$

Note that the pressure change across a node is negligible.

The K2 statement in [Eq. \(18\)](#) applies to all cycles in the graph, which would give us more equations than we need since the vectors of coefficients in [Eq. \(18\)](#) are linearly dependent. Instead, we need a minimal set of linearly independent K2 equations, corresponding to the cycles in a cycle basis of the graph, and we need only apply K2 to these cycles.

To construct a cycle basis of the graph G , we use standard results from graph theory [\[34\]](#). We first construct a spanning tree T , defined as a connected subgraph which contains all the nodes of G and no cycle, as shown in [Fig. 11a](#) on an example. Any tree T has $N - 1$ edges. Therefore there

are $E - (N - 1)$ edges in the graph G but not in the spanning tree T ; for each such edge e , we denote by C_e the unique cycle in the graph created by adding the edge e to the tree T (see **Fig. 11b**). The set of all such cycles C_e is then a cycle basis of G , and thus there are $E - (N - 1)$ cycles in this set. There are therefore $E - N + 1$ independent cycles in the cycle basis.

To compute the spanning tree T we use a breadth-first search (BFS) algorithm [35]. We start from an arbitrary node and explore its neighbouring nodes. We add to T any previously unexplored node (and the corresponding edge) which does not result in the creation of a cycle in T . We then repeat this (in an arbitrary order) on the neighbours of the previous generation of nodes added to T , until no more nodes are left to explore. This is illustrated on an example in **Fig. 11c**.

A similar algorithm is also used to compute the cycles C_e in the cycle basis. This time, however, denoting $e = (i, j)$, the algorithm is started from i and set to terminate as soon as j is visited, yielding a path in the tree from i to j , which, together with the original edge (i, j) , completes a cycle.

3. Pressure boundary conditions at exit nodes

At this point in the modelling, we have $M + E$ independent variables (the flow rates in each edge and at the exit nodes), N equations from K1 (i.e. **Eq. (17)**), and $E - N + 1$ equations from K2 (i.e. **Eq. (18)**). The remaining $M - 1$ equations follow from the pressure conditions at the exit nodes. Specifically, the pressure difference between any pair of exit nodes i and j is zero

$$\sum_{i \rightarrow j} \Delta p = 0. \quad (19)$$

Here the sum $\Sigma_{i \rightarrow j}$ is defined to be over any path P from i to j . Thanks to Kirchhoff's second law, this quantity is path-independent. This indeed gives us $\binom{M}{2} = M - 1$ equations, which we pick to be $\Sigma_{1 \rightarrow j} \Delta p = 0$ for $j = 2, \dots, M$.

We then solve the resulting linear system of $M + E$ equations numerically. Note that we do not need to specify the value of the fluid viscosity μ in our algorithm because it cancels out in the K2 equation, **Eq. (18)**, and in the pressure boundary condition equation, **Eq. (19)**.

E. Simulating particle transport

With our solution for the flows in the active network at each instant of time, we now proceed to track the motion of Brownian particles inside the network using a discretisation of their stochastic equations of motion, as a model for the transport of proteins in the ER network.

We use the simplest approach where we superimpose Brownian motion onto advection by the flow inside each tubule. Let $\mathbf{x}(t)$ denote the position of a Brownian particle in a tubule and \mathbf{x}_n the finite-difference approximation of $\mathbf{x}(n\Delta t)$, where Δt is a discrete time step. The displacement of the particle at each time step can be obtained approximately using an explicit first-order Euler scheme

$$\mathbf{x}_{n+1} = \mathbf{x}_n + \mathbf{U}(\mathbf{x}_n, t)\Delta t + \mathbf{X}(\Delta t), \quad (20)$$

where \mathbf{U} is the instantaneous flow velocity, and the random noise term $\mathbf{X}(\Delta t)$ is drawn from a zero-mean Gaussian with variance $\langle \mathbf{X}(\Delta t)\mathbf{X}(\Delta t) \rangle = 2D\Delta t\mathbf{I}$, where D is the Brownian diffusivity of the particle. In our simulations, we take the diffusion constant to be the mean intranode diffusivity measured in Ref. [11], $D \approx 0.6 \mu\text{m}^2\text{s}^{-1}$. We include interactions between particles and walls by assuming that particles perfectly reflect off walls (i.e. elastic collisions). The particles are modelled as rigid spheres of diameter 5 nm, and the size of the particle matters only during elastic collisions

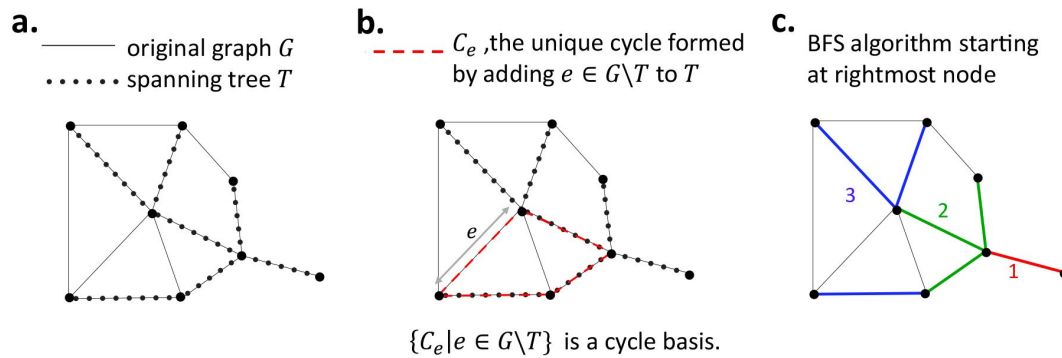


FIG 11

Elements of graph theory required to model the ER network. **a.** A graph G (black solid lines) and its spanning tree T (black dots). **b.** The unique cycle C_e (red) formed by adding an edge $e \in G \setminus T$ to T . **c.** A breadth-first search (BFS) starting at the rightmost node; the graph is explored in the order red, green, blue.

with the walls of the tubules. As relevant in the limit of low volume fraction, we neglect hydrodynamic interactions between particles and perform ensemble averaging of the trajectories of many independent particles.

When a particle enters a node, we model its dynamics as follows. We consider a particle to have entered a node only if it has reached the end of a tubule, say of length l , at which instance we assign the particle to the node-point (i.e. the single point associated with the node in the graph description of the ER network). Although nodes contain a three-dimensional volume, their typical nodal length scale is of the order $R \ll l$, and thus approximating them by point nodes is appropriate on the scale of the whole network. To decide towards which of the connected tubules the particle leaves the node, we estimate the values of the Péclet number Pe in each of the tubules. We define a local Péclet $Pe_i = U_i R / D$ where U_i is the mean flow velocity through tubule i , with $U_i > 0$ for flow out of the node and $U_i \leq 0$ otherwise. We then assume that the particle enters a neighbouring tubule i connected to the node with a probability proportional to $\max(Pe_i + 1, 0)$. This ensures that we have the expected behaviour in both limits of Pe : at high (positive) Péclet numbers, the probability is proportional to the flow speeds in each of the connected tubules, while at low Péclet the exit of the node is limited by diffusion and thus the exit is equally likely in each tubule.

F. Data processing: instantaneous speeds and average edge traversal speeds

During each simulation, we compute the edge traversal speeds as follows. A particle is defined to traverse an edge (i, j) if it travels from node (i.e. junction) i to node j , or from j to i , without visiting i or j in between. The corresponding edge traversal time is then the time between the arrival at the target node and the most recent departure from the node of origin. The edge traversal speed is naturally defined as the length of the tubule (i, j) divided by the edge traversal time.

The average edge traversal speed associated with an edge (i, j) is then defined as the mean over all edge traversal events across (i, j) of the edge traversal speeds.

In addition we also compute for each particle the ‘instantaneous’ speeds defined by $V_n = |\mathbf{X}(t_{n+1}) - \mathbf{X}(t_n)| / \Delta t$, where $t_n = n\Delta t$ with $\Delta t = 18$ ms, which is the same temporal resolution as in the particle tracking carried out in Ref. [11].

G. Incorporating slip boundary conditions

The methodology we have detailed thus far assumes no-slip boundary conditions at the tubule walls for the fluid flow. However, the membrane-bound lipids themselves could also flow in response to the nanoscale luminal flows. This may be modelled by introducing a finite slip boundary condition on the tubule wall. The slip boundary conditions with a slip length $\lambda \geq 0$ at the wall $r = a(z, t)$ are given by

$$u = -\lambda \frac{\partial u}{\partial r}, \quad (21)$$

and $(\mathbf{u} - \frac{\partial a}{\partial t} \mathbf{e}_r) \cdot \mathbf{n} = 0$, with $\mathbf{n} = \frac{\partial a}{\partial z} \mathbf{e}_z - \mathbf{e}_r$, which simplifies to

$$v - \frac{\partial a}{\partial z} u = \frac{\partial a}{\partial t}. \quad (22)$$

We may then derive the long-wavelength solution for the flow field inside an axisymmetric deforming tubule as follows. Using an ansatz for the axial component u that is motivated by the uniform-radius Poiseuille flow with slip,

$$u(r, z, t) = \frac{2}{1 + \frac{4\lambda}{a(z, t)}} \frac{Q(z, t)}{\pi a(z, t)^2} \left[1 - \left(\frac{r}{a(z, t)} \right)^2 + \frac{2\lambda}{a(z, t)} \right], \quad (23)$$

we may solve the incompressibility condition $\frac{1}{r} \frac{\partial}{\partial r}(rv) + \frac{\partial u}{\partial z} = 0$. Regularity at $r = 0$ constrains the integration constant to be zero, yielding

$$\begin{aligned} v(r, z, t) = & \frac{1}{1 + \frac{4\lambda}{a(z, t)}} \frac{\partial a(z, t)}{\partial t} \frac{r}{a(z, t)} \left[2 - \left(\frac{r}{a(z, t)} \right)^2 + \frac{4\lambda}{a(z, t)} \right] \\ & + \frac{2}{1 + \frac{4\lambda}{a(z, t)}} \frac{\partial a}{\partial z} \frac{Q(z, t)}{\pi a(z, t)^2} \frac{r}{a(z, t)} \left\{ 1 + 3\lambda - \left(\frac{r}{a(z, t)} \right)^2 \right. \\ & \left. - \frac{\lambda}{a(z, t)} \frac{1}{1 + \frac{4\lambda}{a(z, t)}} \left[\frac{4\lambda}{a(z, t)} + 2 - \left(\frac{r}{a(z, t)} \right)^2 \right] \right\}, \end{aligned} \quad (24)$$

which automatically satisfies the boundary condition in Eq. (22). Note that the mass conservation equations are not affected by the introduction of a slip length.

Using the new solution for u , the modified Hagen-Poiseuille expression with slip may be derived as before to be

$$\begin{aligned} \Delta p = & -\frac{8\mu}{\pi} \left\{ \frac{L_1}{R^4} + \frac{L}{64\lambda^3(R-b)} \left[\log \left(\frac{1+4\lambda/b}{1+4\lambda/R} \right) - \frac{4\lambda}{b} \left(1 - \frac{2\lambda}{b} \right) + \frac{4\lambda}{R} \left(1 - \frac{2\lambda}{R} \right) \right] \right\} Q_1 \\ & - \frac{8\mu}{\pi} \left\{ \frac{L_2}{R^4} + \frac{L}{64\lambda^3(R-b)} \left[\log \left(\frac{1+4\lambda/b}{1+4\lambda/R} \right) - \frac{4\lambda}{b} \left(1 - \frac{2\lambda}{b} \right) + \frac{4\lambda}{R} \left(1 - \frac{2\lambda}{R} \right) \right] \right\} Q_4, \end{aligned} \quad (25)$$

which does recover the no-slip result as $\lambda \rightarrow 0$.

These results may then be used to simulate particle transport with slip boundary conditions. In **Fig. 3a** we plot the distributions of average edge travel speeds obtained from simulations of a C1 network pinching with the original pinch parameters from Ref. [11] for four different values of the boundary slip length. In **Fig. 3b** we further display the profiles of the longitudinal flow (Eq. (23)) for different slip lengths with the volume flux fixed.

H. Estimate of forces required for pinches

In this section we derive an order-of-magnitude estimate for the forces required to pinch an ER tubule.

We first estimate the difference in the membrane's elastic energy, $\Delta E = E_{\text{pinched}} - E_{\text{unpinched}}$, between the pinched (E_{pinched}) and unpinched configurations ($E_{\text{unpinched}}$). In the absence of spontaneous curvature, the Helfrich free energy h per unit area of a membrane is given by

$$h = \frac{k_c}{2} (2H)^2 + \bar{k}K, \quad (26)$$

where k_c and \bar{k} are bending rigidities, H is the mean curvature, and K is the Gaussian curvature [36]. The mean and Gaussian curvatures may be expressed in terms of the principal curvatures κ_1, κ_2 as $H = (\kappa_1 + \kappa_2)/2$ and $K = \kappa_1\kappa_2$. We take κ_1 and κ_2 to be the principal curvatures in the directions normal and parallel respectively to the tubule's longitudinal axis.

The dominant contribution to ΔE is from E_{pinched} , specifically from the region near the pinch site i.e. the centre of the pinch, where the tubule radius is smallest, taken to be at $z = 0$. We have $\kappa_1 = 1/a(z, t)$ and $\kappa_2 = \mathcal{O}(R/L^2)$, yielding $H = 1/2a + \mathcal{O}(R/L^2)$ and $K = \mathcal{O}(R/aL^2)$. The dominant contribution to the membrane energy $E = 2\pi \int_{-L}^L ha \, dz$ is therefore from H , in a neighbourhood of $z = 0$. Since real pinches do not have kinks, a linear term, for the purposes of estimating membrane energy, is unphysical, and we expect $a(z, t_0) = b_0 + \mathcal{O}(z^2)$ near $z = 0$, where b_0 is the pinch radius in the centre of the pinch in the maximally contracted state and t_0 denotes a time at which the tubule is in a pinched state. We may therefore write $a(z) = b_0 + Rz^2/L^2$ to obtain an order-of-magnitude estimate of the membrane energy in the pinched state.

Evaluating the integral for E_{pinched} then yields the leading-order estimate

$$\Delta E \sim k_c \frac{L}{\sqrt{b_0 R}}, \quad (27)$$

We may take $k_c, \bar{k} \sim 50 k_B T$ (k_B is the Boltzmann constant times and T the room temperature) [37], with estimate values $R = 30$ nm, and $L = 70$ nm. The minimum pinch radius b_0 may be estimated to be 10 nm allowing for membrane thickness and incomplete squeeze, yielding

$$\Delta E \sim 8 \times 10^{-19} J. \quad (28)$$

The hydrodynamic contribution to the energy expenditure during a pinch may be calculated as the sum of the dissipation inside the pinch and in the rest of the network (see §IV K for an analogous calculation for a contracting peripheral sheet). We find that the hydrodynamic contribution is negligible compared to the elastic component of the work done to pinch a tubule.

An estimate for the force required to pinch the tubule may then finally be obtained as $F \sim \Delta E/R \sim 30$ pN.

I. Derivation of theoretical bounds for active flows driven by pinching tubules

1. Advection due to a single pinch

In this section we calculate an upper bound for the axial distance Δz a particle can be advected by the flow produced by an individual pinch. Recall the formula for the volume ‘source’ due to a pinch,

$$q = -\frac{2}{3}\pi \dot{b}L(R + 2b). \quad (29)$$

Among all possible ways for a particle to be transported by a pinch, an upper bound on the transport distance $\Delta z \leq \Delta z_{\text{max}}$ can be reached if all of the following conditions are satisfied: (i) All of the source flows to one side of the pinch (i.e. there is no leakage on the other side); (ii) The particle travels outside the pinching region (axial flows within the pinching region produce smaller advective displacements than those outside, as may be verified numerically); (iii) The

particle travels along the centreline of the tubule (i.e. at twice the cross-section averaged flow velocity, a standard Poiseuille result); (iv) The minimum pinch radius b_0 (recall from **Fig. 10**) is 0.

Under conditions (i) and (ii), the cross-section averaged speed corresponding to maximal transport generated from a single pinch can then be computed using **Eq. (29)** as

$$\pi R^2 \bar{U}(t) = -\frac{2}{3} \pi b L (R + 2b). \quad (30)$$

Using condition (iii), the position of the particle along the centreline $z(t)$ satisfies then the ordinary differential equation

$$\dot{z} = 2\bar{U}(t) = -\frac{4L}{3R^2} b(R + 2b). \quad (31)$$

Integrating this equation from $t = 0$ (start of contraction, with $b(0) = R$) to T (end of contraction, with $b(T) = b_0$) then leads to

$$\Delta z = \frac{8L}{3} \left(1 - \frac{b_0}{2R} - \frac{b_0^2}{2R^2} \right). \quad (32)$$

The value of Δz is maximized when $b_0 = 0$ (i.e. when condition (iv) holds), yielding the upper bound

$$\Delta z \leq \Delta z_{\max} = \frac{8}{3} L. \quad (33)$$

2. Extension to nonlinear interactions between two pinches

An isolated pinch is only capable of reciprocal motions. The simplest system capable of producing non-reciprocal motions is illustrated in **Fig. 5** and consists of two pinch sites arranged in series near the midpoint of a long horizontal tubule.

We may calculate an upper bound on the net particle displacement that can be achieved after both pinch sites pinch exactly once. We make the assumptions (ii)-(iv) as above, and in addition, allow pinches to spend extended amounts of time in their completely closed state; any deviation from these assumptions will result in net transport that is further reduced.

How can we maximise the positive (i.e. rightward in **Fig. 5**) particle displacements induced by the contractions, and minimise the magnitude of the negative (leftward) displacement induced by relaxations? As in the figure, let us denote the pinch on the left ‘pinch 1’ and that on the right ‘pinch 2’. Pinch 1 produces maximum positive displacement (magnitude $4L/3$, i.e. half of the optimal from **Eq. (33)**) when pinch 2 is completely open i.e. when the hydrodynamic resistance to its right is minimal. Pinch 2 then produces maximum positive displacement (of magnitude $8L/3$, i.e. the optimal value in **Eq. (33)**) when pinch 1 is completely closed and all pinch-induced flow continues to be directed rightwards. Similarly, pinch 1 produces minimal negative displacement when pinch 2 is completely closed (zero average displacement, since no flow is then allowed to escape to the right of pinch 2), while pinch 2 then produces a negative displacement of magnitude $4L/3$ to the left when pinch 1 is completely open. These optima can be achieved by the non-reciprocal sequence of motions illustrated in **Fig. 5**: close pinch 1, close pinch 2, open pinch 1, open pinch 2. The coordination between two pinches can therefore be used to generate the net displacement of $8L/3$ equal to the theoretical upper bound from **Eq. (33)**.

J. Modelling of alternative flow generation mechanisms

We have described in detail our modelling of a network driven by the pinching of tubules. In this study we explore two other flow generation mechanisms: the contraction of tubular junctions and the contraction of ER sheets. Our model for pinching tubules is readily generalised to account for these mechanisms, as we describe below.

1. Experimental estimates of junction volumes

From fluorescence microscopy images of ER networks, we measure the fluorescence intensity of junctions (i.e. the number of pixels in a junction multiplied by the mean intensity per pixel). We can then translate this intensity into an estimate of junction volume, assuming that intensity is directly proportional to volume. In order to calibrate the fluorescence intensity, we use our measurements for tubules. Specifically, we use the measured intensities of tubules and their known volumes, obtained by measurements of tubule lengths and the assumption that they are cylinders of radius 30 nm, in order to determine the proportionality constant to convert between pixel intensity and volume. Our new measurement of the intensities of the junctions then allows us to obtain estimates of their volumes; we obtain twelve values, ranging between $0.0020 \mu\text{m}^3$ and $0.0081 \mu\text{m}^3$, with a mean of $0.045 \mu\text{m}^3$ and a standard deviation of $0.0021 \mu\text{m}^3$.

2. Mathematical modelling of contractions of tubular junctions

To include the contribution of tubular junctions into the model (**Fig. 1c**), we assume that in addition to the pinch sites along tubules, each tubular junction pinches independently of other tubules and other tubular junctions. Given a junction, we assume that it expels the same volume ΔV of fluid during a contraction for all its pinches (and takes in the same volume when it relaxes). Each pinch is assumed to create a sinusoidal flow source, so a pinch lasting for a time $2T$ produces a flow rate $S(t) = \Delta V \sin(\pi t/T) \pi/2T$ at a time t measured from the beginning of the pinch, where the numerical factors in $S(t)$ are chosen such that the volume expelled during a contraction is indeed $\int_0^T S(t) dt = \Delta V$. We accommodate the flows from the junctions mathematically by modifying our K1 equations, **Eq. (17)**, to allow the normal nodes to also carry non-zero sources (as opposed to just the pinch nodes, as was the case before); the other equations in the model remain unchanged.

3. Mathematical modelling of contractions of perinuclear sheets

In the tubules-pinching model, we included M exit nodes located towards the exterior of the network and through which flow could enter and exit the system in order to conserve mass. To account for the connection to a perinuclear sheet (**Fig. 1f**), we now assign randomly a number of these exit nodes, denoted $M_2 < M$, to be ‘sheet nodes’ i.e. nodes which are directly connected to a perinuclear sheet, so that a number $M_1 = M - M_2 > 0$ of exit nodes remain. This is illustrated in **Fig. 12**, where we show the C1 network from **Fig. 9** with both sheet nodes (blue asterisks) and exit nodes (red squares).

A sheet contraction+relaxation lasting a time $2T$ produces a total source $S_{\text{sheet}}(t) = V_{\text{sheet}} \pi \sin(\pi t/T)/2T$ at a time t from the beginning of the pinch, where again, the integral of S_{sheet} over a contraction gives a volume V_{sheet} of fluid expelled by the sheet.

Similarly to the mathematical model with tubular pinches only, our independent variables are the E tubule fluxes, the M_1 sources at the exit nodes, and the M_2 sources at the sheet nodes. As before, the K1 (**Eq. 17**) and K2 (**Eq. 18**) equations give us $E + 1$ equations. The requirement that the exit nodes are at the same (exit) pressure gives us $\binom{M_1}{2} = M_1 - 1$ equations, namely the equality $\Delta P_{ij} = 0$ for i, j exit nodes. We make the additional assumption that the sheet nodes are all at the same mechanical pressure (i.e. that they are connected to the same reservoir), which

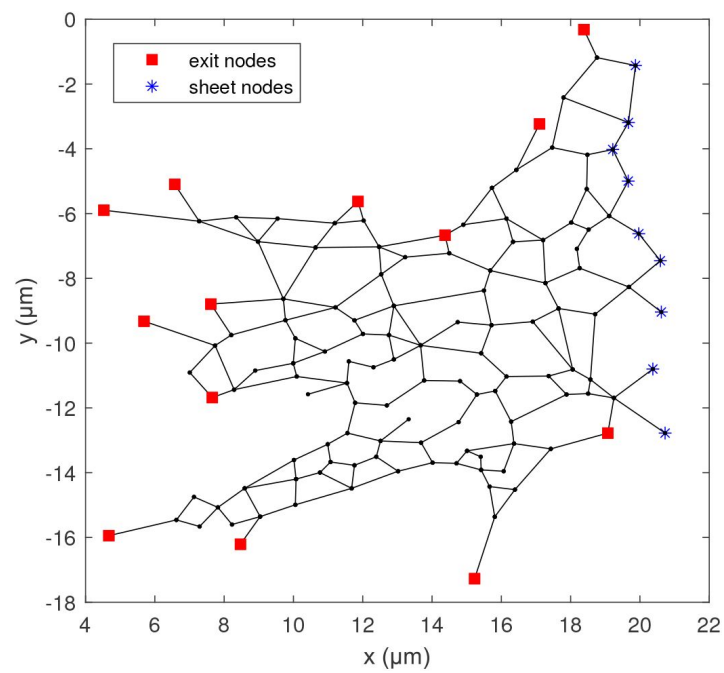


FIG 12

Illustration of the C1 network from Fig. 9 with $M_1 = 13$ exit nodes (red squares) and $M_2 = 9$ perinuclear sheet nodes (blue asterisks).

provides an additional $M_2 - 1$ equations. Requiring that the sources at the sheet nodes sum to the prescribed flow rate S_{sheet} yields one additional equation, so we again have a system of $E + M$ independent linear equations.

4. Experimental estimates of volumes of peripheral sheets

To model the contraction of peripheral sheets (**Fig. 1d**), we need to estimate their contained volumes. Using the open-source image analysis software Fiji [38], we identify nine regions roughly occupied by peripheral sheets in a microscopy image of an ER network; this is illustrated in yellow in **Fig. 13**. We then measure their areas (in μm^2) and convert them to volumes by multiplication with the diameter of a tubule, taken as 60 nm, assuming that the effective thickness of a sheet is equal to the tubular diameter. From our nine data values, we finally obtain a mean sheet volume of $0.12 \mu\text{m}^3$ and a standard deviation of $0.04 \mu\text{m}^3$.

K. Energetic cost estimate for contracting peripheral sheets

The dominant energy expenditure in deforming a pinching tubule is in creating the large membrane curvatures at the narrowest sections of the pinch, and much less work is done against the small volumes of fluid displaced (§IV H). A contracting peripheral sheet, however, displaces a relatively large volume of fluid without attaining the extreme curvatures required in a pinching tubule. We therefore expect, intuitively, that the hydrodynamic contribution will dominate the energy expenditure budget. We now explicitly show this by estimating both elastic and hydrodynamic contributions.

To derive an order-of-magnitude estimate of the energetic cost, we consider an idealisation of a peripheral sheet consisting, in the relaxed state, of two parallel circular membranes $r < R$ located at $z = \pm D$, and in the fully contracted state, of two paraboloids at $z = \pm Dr^2/R^2$ (see **Fig. 14**). The membranes deform as paraboloids between these two states, and we denote the ‘vertical’ distance between the two membranes as $d(r, t)$. We take $R = 0.8 \mu\text{m}$, the value consistent with a sheet thickness $2D = 60 \text{ nm}$ and the mean sheet volume (in the fully relaxed state) of $2\pi R^2 D = 0.12 \mu\text{m}^3$ (see estimation in §IV J 4).

To estimate the elastic contribution, we present an argument similar to the one carried out in §IV H. In the fully contracted state, the principal curvatures of one membrane scales as $\sim 2D/R^2$, so the Gaussian curvature $K \sim 4D^2/R^4$ and the mean curvature $H \sim 2D/R^2$, yielding the Helfrich energy density $h \sim k[2H^2 + K] \sim 12kD^2/R^4$, where k is the typical bending rigidity. The total bending energy of the fully contracted membrane is then $E \sim \pi R^2 h \sim 2 \times 10^{-20} \text{ J}$. In the relaxed state, the membranes are flat and have zero bending energy. Thus the total energy required to contract the two membranes can be estimated as

$$\Delta E \approx 4 \times 10^{-20} \text{ J}. \quad (34)$$

To estimate the hydrodynamic contribution, we first note that the work done instantaneously by the contracting sheet against the fluid, of dynamic viscosity μ , say, is the sum of dissipation rate in the sheet itself and the dissipation rate in the rest of the ER network outside the sheet due to the sheet-induced flows. Any work done against the fluid outside the ER network is neglected since flows decay over short length scales across the network.

We first consider the contribution from within the sheet. We may use lubrication theory to estimate the flows inside a contracting peripheral sheet since the sheet is fairly flat. The leading order lubrication flow between the contracting membranes (located at $z = \pm d(r, t)$) is in the radial

FIG 13

Estimation of areas of peripheral sheets, taken as the regions encircled in yellow.

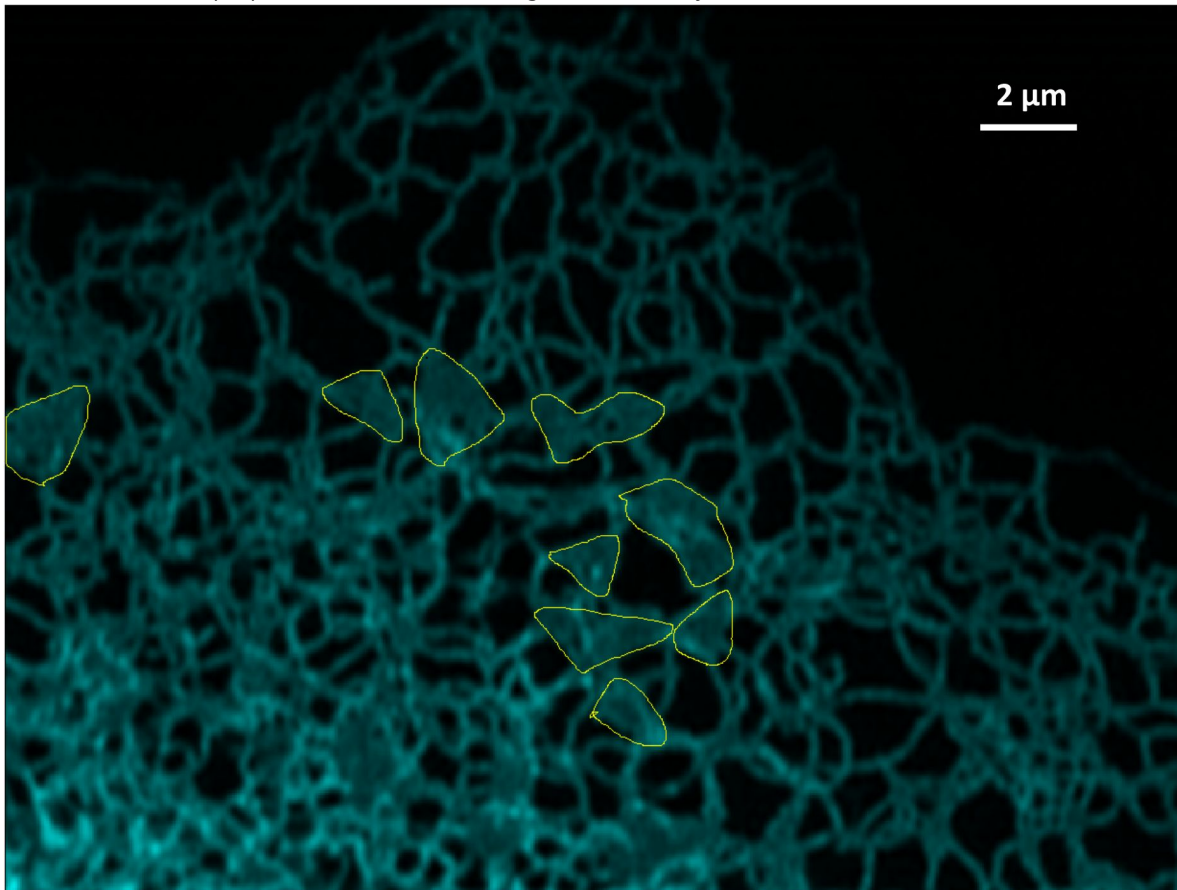
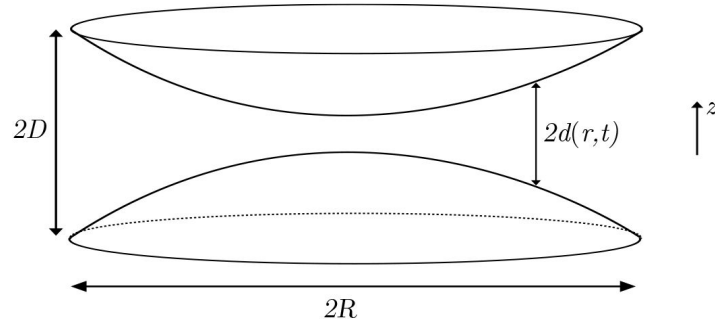


FIG 14

Mathematical idealisation of two contracting peripheral sheets as two paraboloids for the purpose of computing an order-of-magnitude estimate of the energy expended to contract a peripheral sheet.



direction, and given by $u_r = -\frac{1}{\mu} \frac{\partial p}{\partial r} (d^2 - z^2)$, where the unknown radial pressure gradient yielding a radial velocity gradient $\frac{\partial p}{\partial r}$ may be calculated from mass conservation

$2\pi r \int_{-d}^d u_r dz = -\frac{\partial}{\partial t} \left(\int_0^r 4\pi r' d(r', t) dr' \right)$, thus yielding a radial velocity

$$u_r = -\frac{3 \int_0^r r' \dot{d} dr'}{2rd^3} (d^2 - z^2). \quad (35)$$

The dominant contribution to the rate-of-strain tensor is $e_{rz} \approx \frac{1}{2} \frac{\partial u_r}{\partial z} \sim \frac{3R}{2dT}$, where $T \sim 0.5$ s is the contraction duration (in the main text we considered a value of T of 2.5 or 5 times larger than the experimentally measured pinch duration; here we take 5). Therefore the total work done over a contraction scales as the total dissipation rate times the contraction duration T , and we scale

$$W_{\text{inside}} \sim 2\mu \frac{9R^2}{4D^2T^2} \times 2\pi R^2 DT = \frac{9\pi\mu R^4}{DT}. \quad (36)$$

Taking the viscosity of the intraluminal fluid to be 10 times that of water, this is computed to be

$$W_{\text{inside}} \sim 8 \times 10^{-18} \text{ J}. \quad (37)$$

The dissipation rate in the network outside the sheet may be estimated by calculating the total dissipation rate in an idealised network consisting of ‘generations’ of tubules, each of length $1 \mu\text{m}$, with the first generation consisting of three tubules connected to the peripheral sheet, and each tubule in the i^{th} branching out into three tubules of the $(i+1)^{\text{th}}$ generation ad infinitum. The dissipation rate due to a Poiseuille flow of flux q inside a tubule of length l and radius R may be calculated to be

$$\mathcal{D}_{\text{tube}} = \frac{8\mu q^2 l}{\pi R^4}. \quad (38)$$

Denoting by Q the total volume flux created by the contracting sheet, we may calculate the dissipation rate in the network of tubules by summing the above expression across all the tubules as follows. The i^{th} generation of tubules is comprised of 3^i tubules each carrying a flux of $Q/3^i$. Summing the total dissipation rates across all generations gives

$$\mathcal{D}_{\text{network}} = \sum_{i=1}^{\infty} 3^i \frac{8\mu l}{\pi R^4} \left(\frac{Q}{3^i} \right)^2 = \frac{4\mu Q^2 l}{\pi R^4}. \quad (39)$$

We may scale Q as $Q \sim V_s/2T$, recalling our assumption that each peripheral sheet contraction expels half of the volume V_s contained in the sheet (which is consistent with the paraboloidal membrane profile we have taken for the fully contracted sheet). The total dissipation over the contraction duration T in this network of tubules is therefore

$$W_{\text{outside}} \sim \frac{\mu V_s^2 l}{\pi R^4 T}. \quad (40)$$

Scaling the sheet volume with its mean value $V_s \sim 0.12 \mu\text{m}^3$, we may compute this to be

$$W_{\text{outside}} \sim 10^{-16} \text{ J}. \quad (41)$$

The total work done during a contraction is therefore $W = W_{\text{inside}} + W_{\text{outside}} \sim 10^{-16} \text{ J}$. Given that the energy released by the hydrolysis of one ATP molecule is of the order of 10^{-19} J [39], we thus estimate that each contraction of a peripheral sheet would require on the order of 1000 molecules of ATP.

Acknowledgements

EL and PHH are supported by the European Research Council under the European Union's Horizon 2020 research and innovation program (Grant No. 682754 to EL) and by the Cambridge Trust. EA is supported by the UK Dementia Research Institute [award number UK DRI-2004] which receives its funding from UK DRI Ltd, funded by the UK Medical Research Council, Alzheimer's Society and Alzheimer's Research UK

References

- [1] Voeltz G. K., Rolls M. M., Rapoport T. A. (2002) **Structural organization of the endoplasmic reticulum** *EMBO reports* **3**
- [2] Lee C., Chen L. B. (1988) **Dynamic behavior of endoplasmic reticulum in living cells** *Cell* **54**
- [3] Chambers J. E. *et al.* (2022) **Z- α -antitrypsin polymers impose molecular filtration in the endoplasmic reticulum after undergoing phase transition to a solid state** *Science Advances* **8**
- [4] Wang B., Zhao Z., Xiong M., Yan R., Xu K. (2022) **The endoplasmic reticulum adopts two distinct tubule forms** *Proceedings of the National Academy of Sciences* **119**
- [5] Ghaemmaghami S., Huh W.-K., Bower K., Howson R. W., Belle A., Dephoure N., O'Shea E. K., Weissman J. S. (2003) **Global analysis of protein expression in yeast** *Nature* **425**:737–741
- [6] Crapart C. C., Scott Z. C., Konno T., Sharma A., Parutto P., Bailey D. M. D., Westrate L. M., Avezov E., Koslover E. F. (2024) **Luminal transport through intact endoplasmic reticulum limits the magnitude of localized Ca²⁺ signals** *Proceedings of the National Academy of Sciences* **121**
- [7] Blackstone C., O'Kane C. J., Reid E. (2010) **Hereditary spastic paraplegias: Membrane traffic and the motor pathway** *Nature Reviews Neuroscience* **12**:31–42
- [8] Kornak U. *et al.* (2014) **Sensory neuropathy with bone destruction due to a mutation in the membrane-shaping atlastin GTPase** *Brain* **137**
- [9] Arno G. *et al.* (2016) **Mutations in REEP6 cause autosomal-recessive retinitis pigmentosa** *The American Journal of Human Genetics* **99**
- [10] Nehls S., Snapp E. L., Cole N. B., Zaal K. J., Kenworthy A. K., Roberts T. H., Ellenberg J., Presley J. F., Siggia E., Lippincott-Schwartz J. (2000) **Dynamics and retention of misfolded proteins in native er membranes** *Nature Cell Biol* **2**
- [11] Holcman D., Parutto P., Chambers J. E., Fantham M., Young L. J., Marciniak S. J., Kaminski C. F., Ron D., Avezov E. (2018) **Single particle trajectories reveal active endoplasmic reticulum luminal flow** *Nature Cell Biology* **20**:1118–1125
- [12] Konno T. *et al.* (2024) **Endoplasmic reticulum morphology regulation by rtn4 modulates neuronal regeneration by curbing luminal transport** *Cell Reports*
- [13] Blackstone C. (2018) **Converging cellular themes for the hereditary spastic paraplegias** *Current Opinion in Neurobiology* **51**
- [14] Gao G., Zhu C., Liu E., Nabi I. R. (2019) **Reticulon and CLIMP-63 regulate nanodomain organization of peripheral ER tubules** *PLOS Biology* **17**
- [15] Schroeder L. K., Barentine A. E., Merta H., Schweighofer S., Zhang Y., Baddeley D., Bewersdorf J., Bahmanyar S. (2018) **Dynamic nanoscale morphology of the ER surveyed by STED microscopy** *Journal of Cell Biology* **218**

- [16] Leal L. G. (2007) **Advanced Transport Phenomena: Fluid Mechanics and Convective Transport Processes**
- [17] Coy D. L., Wagenbach M., Howard J. (1999) **Kinesin takes one 8-nm step for each ATP that it hydrolyzes** *Journal of Biological Chemistry* **274**
- [18] Schnitzer M. J., Block S. M. (1997) **Kinesin hydrolyses one ATP per 8-nm step** *Nature* **388**:386–390
- [19] Barclay C. J. (2017) **Energy demand and supply in human skeletal muscle** *Journal of Muscle Research and Cell Motility* **38**:143–155
- [20] Klughammer N., Bischof J., Schnellbacher N. D., Callegari A., Lénárt P., Schwarz U. S. (2018) **Cytoplasmic flows in starfish oocytes are fully determined by cortical contractions** *PLOS Computational Biology* **14**
- [21] Guo M., Ehrlicher A. J., Jensen M. H., Renz M., Moore J. R., Goldman R. D., Lippincott-Schwartz J., Mackintosh F. C., Weitz D. A. (2014) **Probing the stochastic motor-driven properties of the cytoplasm using force spectrum microscopy**, *Cell* **158**
- [22] Lin C., Schuster M., Guimaraes S. C., Ashwin P., Schrader M., Metz J., Hacker C., Gurr S. J., Steinberg G. (2016) **Active diffusion and microtubule-based transport oppose myosin forces to position organelles in cells** *Nature Communications* **7**
- [23] Dayel M. J., Hom E. F., Verkman A. S. (1999) **Diffusion of green fluorescent protein in the aqueous-phase lumen of endoplasmic reticulum** *Biophys. J* **76**
- [24] Koslover E. F., Chan C. K., Theriot J. A. (2017) **Cytoplasmic flow and mixing due to deformation of motile cells** *Biophysical Journal* **113**
- [25] Fisher M. E., Kolomeisky A. B. (1999) **The force exerted by a molecular motor** *Proceedings of the National Academy of Sciences* **96**
- [26] Jülicher F., Ajdari A., Prost J. (1997) **Modeling molecular motors** *Rev. Mod. Phys* **69**
- [27] Al-Izzi S. C., Rowlands G., Sens P., Turner M. S. (2018) **Hydro-osmotic instabilities in active membrane tubes** *Phys. Rev. Lett* **120**
- [28] Guo Y. *et al.* (2018) **Visualizing intracellular organelle and cytoskeletal interactions at nanoscale resolution on millisecond timescales** *Cell* **175**
- [29] Heinrich L. *et al.* (2021) **Whole-cell organelle segmentation in volume electron microscopy** *Nature* **599**:141–146
- [30] Wu Y., Whiteus C., Xu C. S., Hayworth K. J., Weinberg R. J., Hess H. F., De Camilli P. (2017) **Contacts between the endoplasmic reticulum and other membranes in neurons** *Proceedings of the National Academy of Sciences* **114**
- [31] <https://imagej.nih.gov/ij/>. no date
- [32] Batchelor G. K. (1967) **An Introduction to Fluid Dynamics**

- [33] Alim K., Amselem G., Peaudecerf F., Brenner M. P., Pringle A. (2013) **Random network peristalsis in *Physarum polycephalum* organizes fluid flows across an individual** *Proc. Natl. Acad. Sci. USA* **110**:13306–13311
- [34] Wilson R. J. (2015) **Introduction to graph theory**
- [35] Goodrich M. T., Tamassia R. (2015) **Algorithm design and applications**
- [36] Helfrich W. (1973) **Elastic properties of lipid bilayers: Theory and possible experiments** *Zeitschrift für Naturforschung C* **28**
- [37] Faizi H. A., Frey S. L., Steinkühler J., Dimova R., Vlahovska P. M. (2019) **Bending rigidity of charged lipid bilayer membranes** *Soft Matter* **15**
- [38] <https://fiji.sc/>. no date
- [39] Bray D. (2001) **Cell movements: From molecules to motility**
- [40] https://commons.wikimedia.org/wiki/File:Endomembrane_system_diagram_notext.svg. no date

Editors

Reviewing Editor

Pierre Sens

Institut Curie, CNRS UMR168, Paris, France

Senior Editor

Aleksandra Walczak

École Normale Supérieure - PSL, Paris, France

Reviewer #1 (Public review):

Theoretical principles of viscous fluid mechanics are used here to assess likely mechanisms of transport in the ER. A set of candidate mechanisms are evaluated, making good use of imaging to represent ER network geometries. Evidence is provided that contraction of peripheral sheets provides a much more credible mechanism than contraction of individual tubules, junctions or perinuclear sheets.

The work has been conducted carefully and comprehensively, making good use of underlying physical principles. There is good discussion of the role of slip; sensible approximations (low volume fraction, small particle size, slender geometries, pragmatic treatment of boundary conditions) allow tractable and transparent calculations; clear physical arguments, including an analysis of energy budgets, provide useful bounds; stochastic and deterministic features of the problem are well integrated.

<https://doi.org/10.7554/eLife.93518.2.sa1>

Author response:

The following is the authors' response to the original reviews.

Reviewer #1 (Public Review):

Theoretical principles of viscous fluid mechanics are used here to assess likely mechanisms of transport in the ER. A set of candidate mechanisms is evaluated, making good use of imaging to represent ER network geometries. Evidence is provided that the contraction of peripheral sheets provides a much more credible mechanism than the contraction of individual tubules, junctions, or perinuclear sheets.

The work has been conducted carefully and comprehensively, making good use of underlying physical principles. There is a good discussion of the role of slip; sensible approximations (low volume fraction, small particle size, slender geometries, pragmatic treatment of boundary conditions) allow tractable and transparent calculations; clear physical arguments provide useful bounds; stochastic and deterministic features of the problem are well integrated.

We thank the reviewer for their positive assessment of our work.

There are just a couple of areas where more discussion might be warranted, in my view.

(1) The energetic cost of tubule contraction is estimated, but I did not see an equivalent estimate for the contraction of peripheral sheets. It might be helpful to estimate the energetic cost of viscous dissipation in generated flows at higher frequencies.

This is a good point. We have now included an energetic cost estimate for the contractions of peripheral sheets in the revised manuscript.

The mechanism of peripheral sheet contraction is unclear: do ATP-driven mechanisms somehow interact with thermal fluctuations of membranes?

The new energetic estimates in the revision might help constrain possible hypotheses for the mechanism(s) driving peripheral sheet contraction, and suggest if a dedicated ATP-driven mechanism is required.

(2) Mutations are mentioned in the abstract but not (as far as I could see) later in the manuscript. It would be helpful if any consequences for pathologies could be developed in the text.

We are grateful for this suggestion. The need to rationalise pathology associated with the subtle effects of mutations of ER-morphogens is indeed pointed out as one factor motivating the study of the interplay between ER structure and performance. In the revised manuscript, we have included a brief discussion potentially linking the malfunction of ER morphogens to luminal transport, referencing freshly published findings.

Reviewer #2 (Public Review):

Summary:

This study explores theoretically the consequences of structural fluctuations of the endoplasmic reticulum (ER) morphology called contractions on molecular transport. Most of the manuscript consists of the construction of an interesting theoretical flow field (physical model) under various hypothetical assumptions. The computational modeling is followed by some simulations.

Strengths:

The authors are focusing their attention on testing the hypothesis that a local flow in the tubule could be driven by tubular pinching. We recall that trafficking in the ER is considered to be mostly driven by diffusion at least at a spatial scale that is large enough to account for averaging of any random flow occurring from multiple directions [note that this is not the case for plants].

We thank the reviewer. Indeed, the trafficking in the ER was historically presumed to be driven by passive diffusion but this has been challenged by recent findings suggesting that the transport may also involve an active super-diffusional component (the short-lasting flows). These findings include: the dependence of ER luminal transport on ATP-derived energy observed in the historical and recent publications cited here; fast and directional single-particle motion; and a linear scaling of photoactivated signal arrival times with distance. On a larger scale, indeed, the motion can be seen as a faster effective diffusion, as there is no persistent circulatory directionality of the currents.

Weaknesses:

The manuscript extensively details the construction of the theoretical model, occupying a significant portion of the manuscript. While this section contains interesting computations, its relevance and utility could be better emphasized, perhaps warranting a reorganization of the manuscript to foreground this critical aspect.

Overall, the manuscript appears highly technical with limited conclusive insights, particularly lacking predictions confirmed by experimental validation. There is an absence of substantial conclusions regarding molecular trafficking within the ER.

We sought to balance the theoretical/computational details of our model with the biophysical conclusions drawn from its predictions. Given the model's complexity and novelty, it was essential to elucidate the theoretical underpinnings comprehensively, in order to allow others to implement it in the future with additional, or different, parameters. To maintain clarity and focus in the main text, we have judiciously relegated extensive technical details to the methods section or supplementary materials, and divided the text into stand-alone section headings allowing the reader to skip through to conclusions.

The primary focus of our manuscript is to introduce and explore, via our theoretical model, the interplay between ER structure dynamics and molecular transport. Our approach, while *in silico*, generates concrete predictions about the physical processes underpinning luminal motion within the ER. For instance, our findings challenge the previously postulated role of small tubular contractions in driving luminal flow, instead highlighting the potential significance of local flat ER areas—empirically documented entities—for facilitating such motion.

Furthermore, by deducing what type of transport may or may not occur within the range of possible ER structural fluctuations, our model offers detailed predictions designed to bridge the gap between theoretical insight and experimental verification. These predictions detail the spatial and temporal parameters essential for effective transport, delineating plausible values for these parameters. We hope that the model's predictions will invite experimentalists to devise innovative methodologies to test them. We have introduced text edits to the revised version to clarify the reviewer's point as per the detailed comments below.

Recommendations for the authors:

Editor comments (Recommendations For The Authors):

The two reviewers have different opinions about the strengths and weaknesses of this work. The editors do believe that this work is a valuable contribution to the field of ER dynamics and transport, and could stimulate experiments.

We thank both reviewers and the editors for the time and care they have invested in reviewing our manuscript.

Nevertheless, discussing further the role of diffusion vs. advection in ER luminal transport, including conflicting values of measured diffusion coefficients, would be valuable. For instance, it is possible that the active contraction-driven mechanism results in an effective diffusion over a long time, which could be quantified and compared to experiments.

In our study we focus on tubule-scale transport because the statistics of transport at this scale have been measured and the origins of the observed transport is an outstanding problem. We already know from Holcman et al. (2018) that transport at the tubule scale involves an active, possibly advective, component beyond passive molecular diffusion. Although we do touch briefly on a network-scale phenomenon in our section on mixing/content homogenisation, our main focus is on trying to understand tubule-scale transport. We agree that a substantial exploration of effective diffusion over a network scale would be of value and increase the breadth of our paper, we feel that this is beyond the scope of the current paper. We believe the “conflicting” diffusion coefficients, in fact, characterise motion at different time and length scales: the global diffusion coefficient pointed out to us in the reviews may pertain to network-scale *effective* diffusion over long time scales, but this is different to the Brownian motion on the scale of tubules/tubular junctions relevant to our *in silico* model.

Reviewer #1 (Recommendations For The Authors):

I congratulate the authors on their work and do not have any substantial further recommendations, beyond two minor points.

(1) Before (13), say "Using the expression (7) for Q_2 , ..."

(2) Typo on p.25: "principal" rather than "principle" (two instances)

We thank the reviewer for spotting these and have addressed both points.

Reviewer #2 (Recommendations For The Authors):

Here are some specific comments:

(1) Insufficient Influence of ER Tubule Contraction:

The conclusion regarding weak fluid flows generated by ER tubule contractions may seem obvious. It would be more intriguing if the authors explored conditions necessary to achieve faster flows, such as those around 20 $\mu\text{m/s}$, within tubules.

We agree these are important conditions to explore and it is extensively covered in Fig. 4e-f, which show that tubule contraction sites the length of entire tubules and occurring at 5 and 10 times the experimentally measured rates produce mean average edge traversal speeds exploring other conceivable scenarios. of ~ 30 and 60 m/s respectively. These pinch parameters seemed unlikely and motivated

(2) Limited Impact of ER Network Geometry:

The comparison across different ER network structures seems insufficiently documented. A comparison between distal and proximal ER from the nucleus could provide deeper insights.

We have added text in the new paragraph 4 of the introduction to better articulate the core principles of the ER's structural elements. As established by historical EM and light microscopy, the ER is universally composed of tubules, with 3-way junctions, and small (peripheral) or large perinuclear sheets. We establish that the specific shaping of these elements influences the nanofluidics we investigate here. While the proportion of these elements may vary across different cell types and cellular regions, the fundamental structure, and therefore the impact on local mobility remains consistent. Our categorisation of the ER into its elements reflects these ubiquitous components, allowing us to analyse the impact of shaping at the relevant scale, covering the perinuclear and peripheral ER.

(3) Ineffectiveness of Tubule Junction Contraction:

The study's negative result on ER tubule junction contraction's impact on molecular exchange may not capture broad interest without experimental validation. Conducting experiments to test this hypothesis could strengthen the study.

We agree that experimental testing of this prediction in the future, when appropriate tools become available to correlate molecular motion speed and fast contractions of nanoscopic tubular junctions, will be needed for its validation.

(4) Potential Role of Peripheral Sheets:

While the speculation on the contraction of peripheral ER sheets is intriguing, further experimental investigation is warranted to validate this hypothesis, especially considering the observed slow diffusion in ER sheets.

We agree with the reviewer that our study is theoretical in nature and on the necessity of further experimental investigation before we are able to make a definitive conclusion on peripheral sheets.

In summary, while the study underscores the complexity of ER morphology dynamics and its implications for molecular transport, its novelty and broad implications seem limited. Given its reliance on computational simulations and dense theoretical language, submission to a computational journal could be more appropriate. In addition, given there is an absence of substantial conclusions regarding molecular trafficking within the ER, publication in a specialized journal of fluid mechanics or physics may be appropriate.

Comments:

- The manuscript is hard to read. There is no smooth transition from Figure 1 to Figure 2.

To smoothen the transition, we edited the text at the beginning of results and added a reference there to the introductory Fig. 1.

- Figure 8 serves no purpose. To make the text easier, C0, C1, C2... should be presented in Figure 2 and merged with Figure 10 with a table summarizing the information of these networks. It is not clear why 5 networks are needed. They look similar. Could you add the number of nodes per network?

We have now merged Fig 8 and Fig 10 from the previous version into one figure (which is now Fig 9). We have also added information about the number of nodes and added a

sentence in the manuscript to clarify that it showcases the source data used to model/reconstruct realistic ER structures.

- Figure 13: seems out of context. What is the message? The ER does not show any large flow--from early FRAP and recent photoactivation - the material seems to diffuse at long distances made by few tubules.

Fig 13 (now Fig 12 in the revised version) does not illustrate any flow. Its purpose is to illustrate the computational methodology used to simulate flows and transport due to contraction of perinuclear sheets. (Note that we have spotted and fixed a small but important typo in the caption: “peripheral” → “perinuclear”.) It is worth noting that FRAP provides a relative estimate of mobility but contains no information as to the mode of motion. Whether the motion is diffusive or otherwise must be presumed in FRAP analyses and this presumption then can be used to extract metrics such as the diffusion coefficient. Photoactivation analyses suffer from the same limitation but analysis of how photoactivated signal arrival times scale with distance was recently suggested as a workaround. These measurements suggest a superdiffusive ER transport (<https://doi.org/10.1016/j.celrep.2024.114357>). Although a different approach used in a recent preprint to photoactivation signal analysis suggests that at long-distances transport can be approximated as diffusion (<https://doi.org/10.1101/2023.04.23.537908>), improved measurement in the future would be needed to address the seeming discrepancies.

- Figure 1: what is the difference between a and b? How do you do your cross-section? This probability needs a drawing at least to understand how you define it.

We expanded the explanation in the third last paragraph of Section I.

- Figure 2: this manuscript is not a review. It is not clear why part of a figure is copied and pasted from another manuscript. It should be removed. Are the authors using the quantification [peaks of different color]? Where? The title should be given to explain each panel.

We have chosen to keep the inset, which was not in the main text of the cited paper but its supplementary information, and provides a direct benchmark for our work.

Why the mean flow in a is stochastic? With large excursion for large values? Could you plot the Fourier or spectrogram so we can understand the frequencies? Are there regular patterns of bursts?

The mean (i.e. cross-sectionally averaged) flow is stochastic because the pinching events are random (more precisely, they follow a Poisson distribution, as explained in the paper). Large excursions are rare and caused by interactions between pinches. We have prescribed the distributions of pinch durations and frequencies as per experimentally measured distributions and we do not expect to recover from a Fourier analysis more information than we have prescribed.

What do we learn from the fit of Fig 2b-c? Is it a constant flow?

The conclusion of Fig 2b-c is that the in silico simulation model based on the pinching tubule hypothesis produces solute transport, as quantified by the instantaneous particle speeds (Fig 2b) and the average edge traversal speeds (Fig 2c), that is much weaker than experimentally measured. This is one of the main results of our paper and explained in Section IIA, paragraph 3. Fig 2a tells us that the flow is not constant (flows in this system can only be generated transiently, with directionality persistence considered unlikely).

Figure 14: Estimating of the area is unclear. The legend is largely insufficient. Why did the authors report only nine regions of contractions? Is it so rare? How many samples have they used? Nine among how many?

Thank you; the details of area estimation are included in the main text, in Section I.4. The nine regions are an arbitrary selection of a sample we deemed representative of this phenomenon.

- Abstract: this is misleading, it should start by explaining that diffusion is the consensus of trafficking in the ER.

- "the content motion in actively contracting nanoscopic tubular networks" is misleading. We should recall that this is an assumption that has not been proven.

The current abstract is a succinct summary of the question in scope and results. The sentence highlighted by the referee specifically refers to the model we study in the paper; we modified it in order to remove any ambiguity and to make clear that we are testing a proposed mechanism. We also point out that although the biological origins of the tubule contractions or their effects on solute transport have not been established, these contractions have been documented.

Minor comments:

Introduction: "Thus past measurements indicate that the transport of proteins in ER is not consistent with Brownian motion" is misleading. You should explain that this depends on the time scale. At large timescale, diffusion is a coarse-grained description and is actually accurate from FRAP and photoactivation data [see J. Lippincott-Schwartz publications over the past 20 years]. The super-diffusion [9] "A photoactivation chase technique also measured a superdiffusive behaviour of luminal material spread through the ER network [9]." This is not clear and is probably due to an artifact of measurements or interpretation.

We thank the reviewer for this comment. We expanded in paragraph 2 of the introduction to better reflect the state of knowledge around this point.

Page 2 "Strocites" does not exist you may be meant "Astrocytes".

Thank you; typo fixed.

Page 5: The value of the flow seems incompatible with previous literature $\sim 20 \mu\text{m/s}$. Again where 0.6 is found? Where in [7]: if there is no diffusion in the tubule, why compare with $0.6 \mu\text{m}^2/\text{s}$? The global diffusion coefficient is much higher $\sim 5 \mu\text{m}^2/\text{s}$.

Supplementary Figure 3b of $\mu\text{Holcman et al.}$, Nat Cell Biol, 2018 (Ref. [7] in the unrevised version: The value of $0.6 \mu\text{m}^2/\text{s}$ is the intranodal diffusion coefficient reported empirically in our article), for ER in COS-7 cells. Motion inside the tubule would in general consist of a combination of advection and diffusion; since the same fluid occupies the tubules and the $\mu\text{m}^2/\text{s}$ as the diffusion coefficient in tubules as well. The experiments in Holcman *et al.* (2018) μ junctions, and the junction sizes are similar to the tubule diameters, it is reasonable to take 0.6 does not mention diffusion inside tubules because (i) the study reports a dominantly advective (or at least active) transport across tubules (the driving mechanism of which remains unknown) but this does not mean diffusion is not there as well; and (ii) the time resolution in these experiments are too low to capture the fine details of solute motion inside tubules, and the transport is captured only as "jumps" between junctions. We point out also

that the higher global diffusion coefficient may pertain to network-scale effective diffusion over long time scales, which is different to the Brownian motion at the scale of tubules/tubular junctions relevant to our *in silico* model.

Page 5: *"The distributions of the average edge traversal speeds appeared insensitive to ER structure variations for both pinching-induced and exclusively diffusion transport." is rather trivial. Similar to "the presumed pinching parameters would be inadequate to facilitate ER luminal material exchange."*

These sentences, and the surrounding text, report the observed outcome of our numerical simulations: pinch-induced transport statistics has little variation across different ER geometries, and pinching does not facilitate luminal content mixing. This conclusion was not clear to us without running the simulation, and hence we deemed it nontrivial and relevant to comment on.

Page 7: *The authors mention that they could measure "typical edge traversal speed of 45 $\mu\text{m/s}$ ".*

I am not aware of such a measurement. Could they explain where this number comes from?

These measurements were reported in Supplementary Figure 3b (bottom right) of Holcman *et al.* (2018) and are for the ER in a COS-7 cell. The main figure Fig. 2g reports analogous measurements for COS-7 cells because the tubule contraction data reported in this work measurements (mean speed 20 $\mu\text{m/s}$) for a HEK-293 cell. We have worked with the speed pertains to COS-7 cells.

A contraction that leads to 3.9 $\mu\text{m/s}$ over a distance of a few microns would be interesting. Is this a prediction of the present model?

Yes, as stated in Section II, C paragraph 2. The present model with the experimentally measured averages for the tubule contraction parameters does indeed predict that a particle, in the absence of diffusion, is transported by a single tubule contraction at a *maximum* speed of 3.9 $\mu\text{m/s}$ over 0.19 μm .

<https://doi.org/10.7554/eLife.93518.2.sa0>