

Content

- **‘Green Infrastructure’ – definitions & key concepts**
- **The Case for Green Infrastructure**
- **Policy Support**
- **Key challenges and issues**

Infrastructure?



the**landscape**partnership

Green Infrastructure?



the**landscape**partnership

Definition of Green Infrastructure ?

“... a strategic, multi-functional network of public green spaces and routes, landscapes, biodiversity and heritage. It includes a wide range of elements such as country parks, wildlife habitats, rights of way, commons and greens, nature reserves, waterways and bodies of water, and historic landscapes and monuments. The network comprises rural and urban Green Infrastructure of different sizes and character, and the connections and links between them. It is part of (and contributes to) the wider environment.”

(Cambridgeshire Green Infrastructure Strategy)

Green Infrastructure: Key Concepts

- **Connectivity - networks**
- **Sustainability – location & design**
- **Multi-functionality**



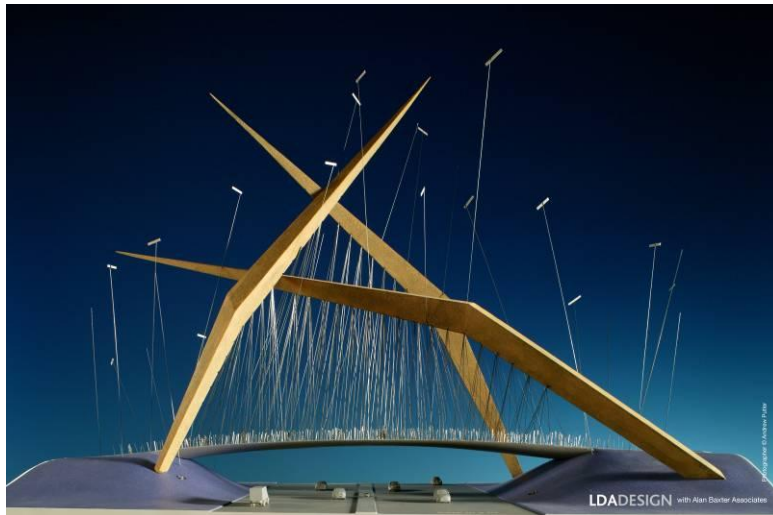
Green Infrastructure: Scale

- **Regional / Sub-regional**
- **City**
- **District**
- **Neighbourhood**
- **Local**



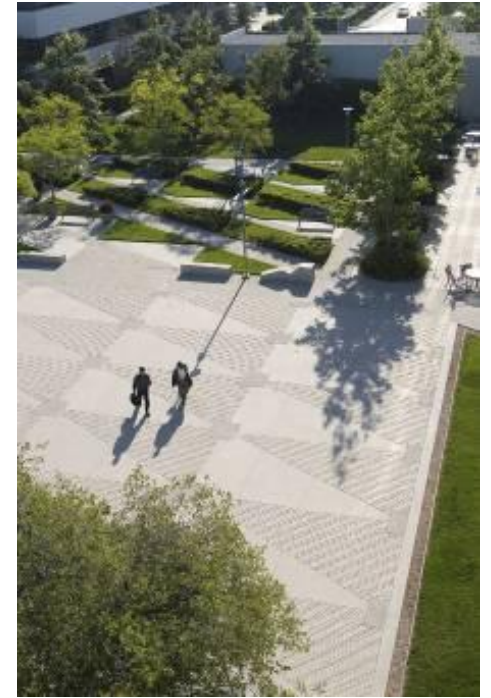
Green Infrastructure: Quality

- Enhancing existing assets
- Creating new assets
- Landmark Projects



Range of Environments

- **Urban**
- **New communities**
- **Rural - Urban Fringe**
- **Wider countryside**



Economic Benefits of green infrastructure

- Helps create favourable image of place
- Encourages employment and inward investment
- Adds value to surrounding property
- Multi functional design delivers good value
- Contributes to attracting tourists
- Reduces health costs



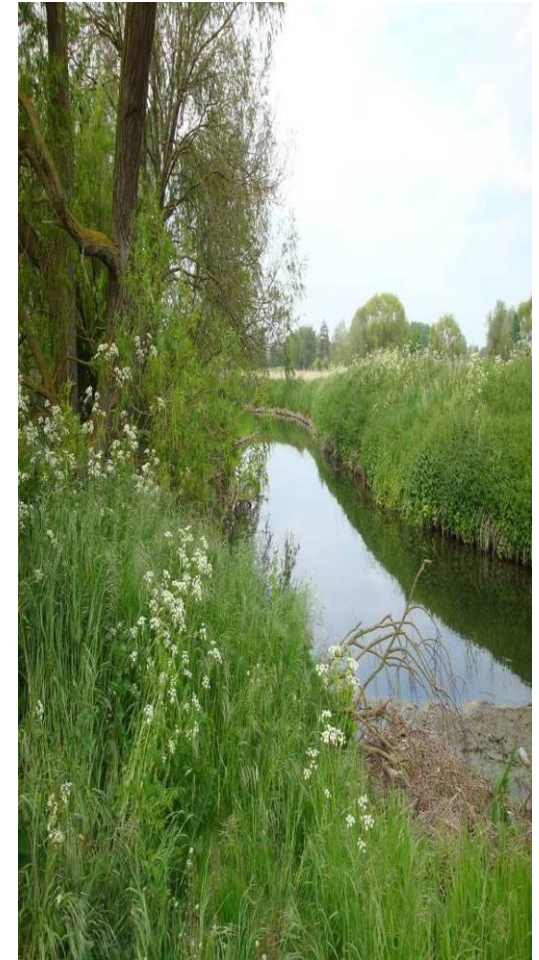
Social Benefits of Green Infrastructure

- Recreation: rest, play & exercise
- Physical and mental health
- Reconnects people with nature
- Scope for community involvement with land
- Outdoor classroom
- Reduction in crime & anti social behaviour



Environmental Benefits of Green Infrastructure

- Protection of existing natural habitats & species
- Promote an enhanced network of natural systems
- Improvement of air and water quality
- Mitigate and adapt to climate change
- Opportunities for connection with cultural heritage
- Space for food and renewable energy production



Multi-functionality: SUDS



Multi-functionality: SUDS

SUSTAINABLE DRAINAGE





National Planning Policy Framework (NPPF)

- *ensure access to open spaces and recreational facilities that promote the health and well-being of the community* (p124)
- Provision for Local Green Space Designations (p131)
- Green Infrastructure is referred to re adaption to climate change (154)
- Local planning authorities should: *‘set out a strategic approach in their Local Plans, planning positively for the creation, protection, enhancement and management of networks of biodiversity and green infrastructure’* (167)

The Natural Choice: securing the value of nature (2011 White Paper)

The Natural Choice:
securing the value
of nature

- Sets out measures to protect and improve the health of ecosystems
- Supports multi-functional use of the environment
- Identifies action to support businesses to understand and manage their global and local environmental impacts
- Indicates that the Government will establish a Green Infrastructure Partnership to support the development of green infrastructure in England



The Natural Choice: securing the value of nature (2011)

HM Government

The Natural Choice:
securing the value
of nature

Ecosystem services

The products of natural systems from which people derive benefits, including goods and services

- Provisioning services – food , timber etc
- Regulating services – flood mitigation, climate regulation
- Cultural services – spiritual and cultural; enrichment
- Supporting services – soil formation and nutrient recycling



The Natural Choice: securing the value of nature (2011)

The Natural Choice:
securing the value
of nature

Local Nature Partnerships

- Brings local people and the economy together in partnership
- Work at a strategic scale to improve a healthy natural environment.
- Focus on multiple benefits from good management of the land
- Promote an ecosystems approach at a local level
- May cross administrative boundaries



The Natural Choice: securing the value of nature (2011)

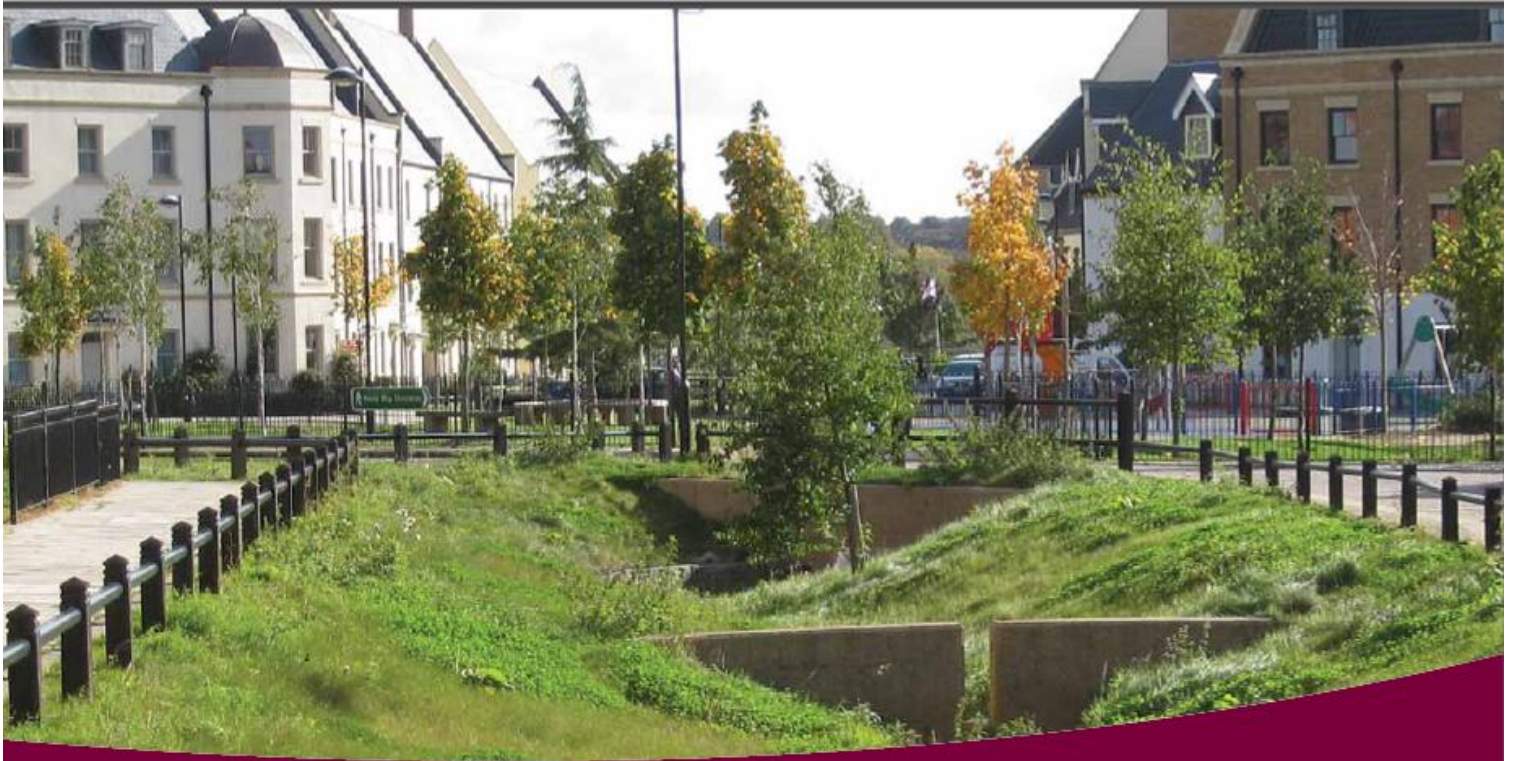
Green Investment Bank

A new Green Investment Bank - with £3bn funding

- To increasing private sector investment in green infrastructure
- State aid rules under European Commission
- State-aid compliant investments in green infrastructure projects from April 2012



Green Infrastructure Guidance



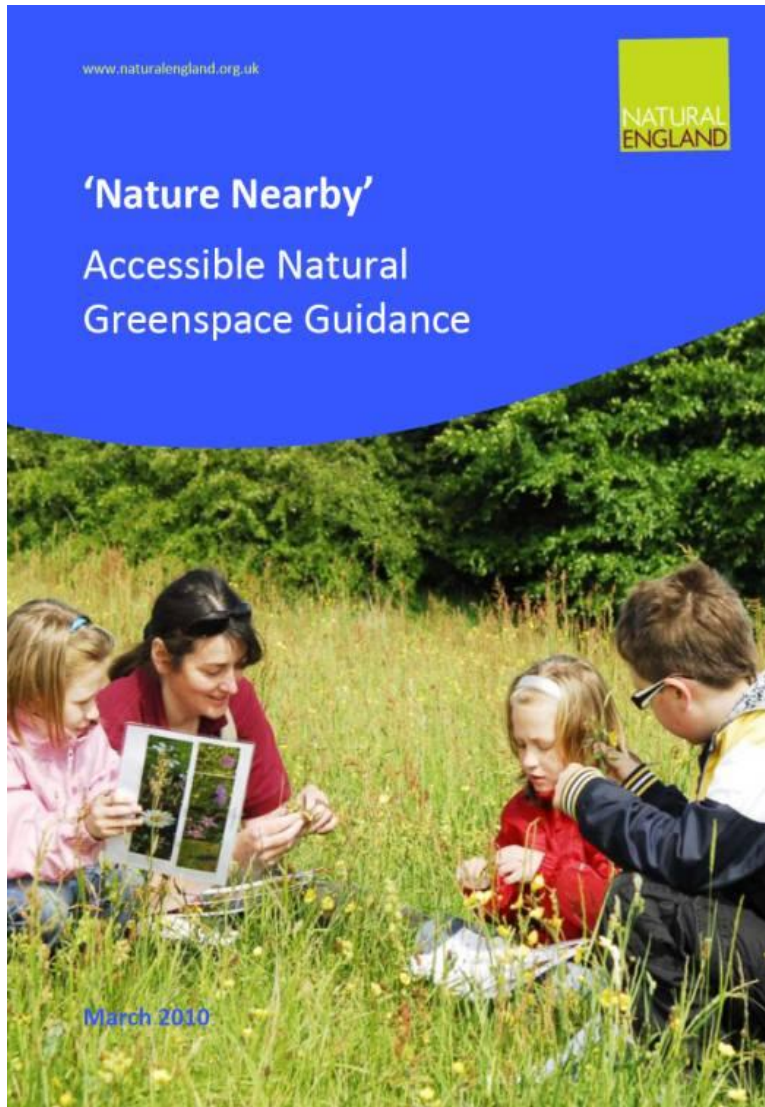
Green Infrastructure Guidance

www.naturalengland.org.uk



the**landscape**partnership

'Nature Nearby' guidance

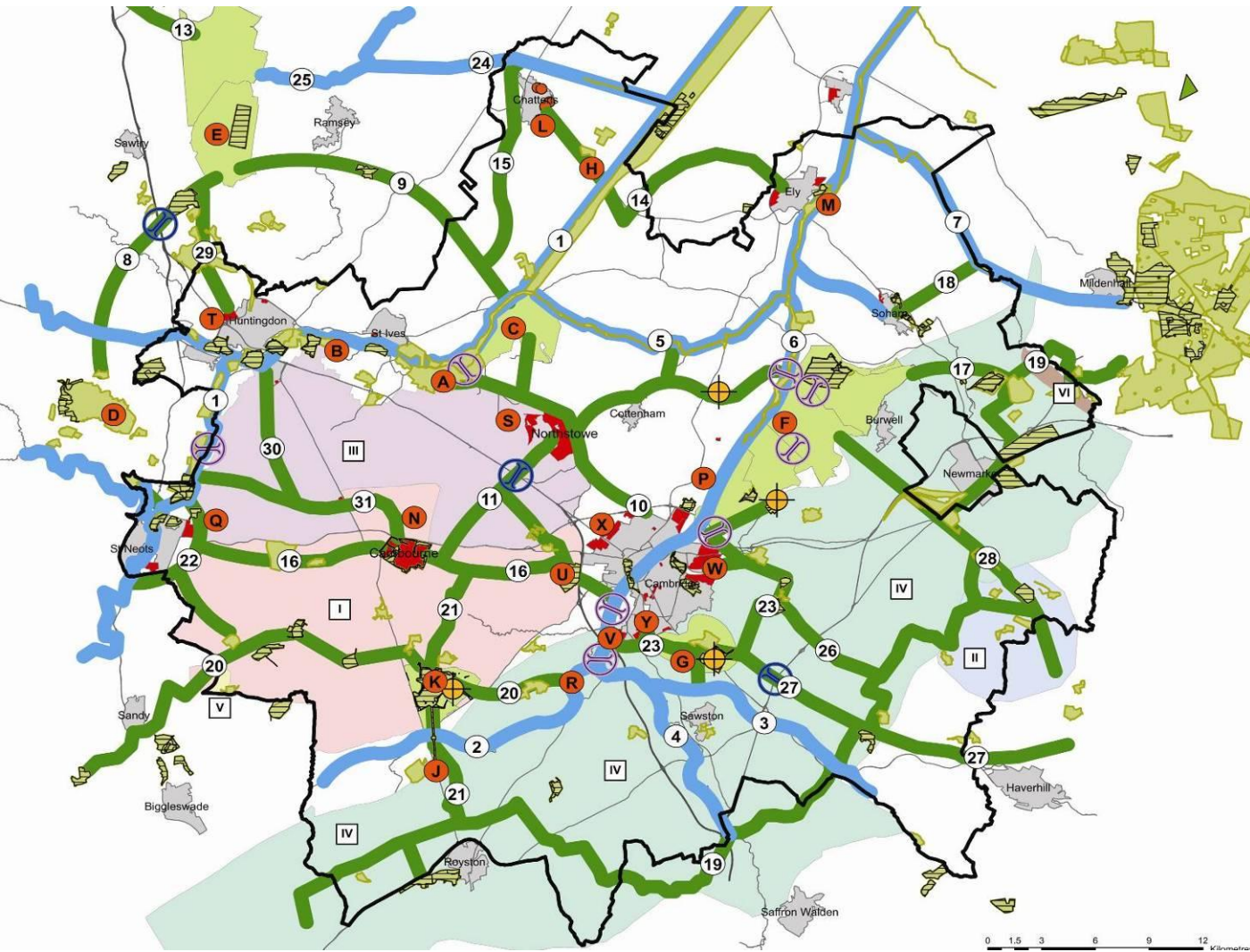


- Guidance for decision makers
- Sets out ANGST standards
- Guidance on delivery

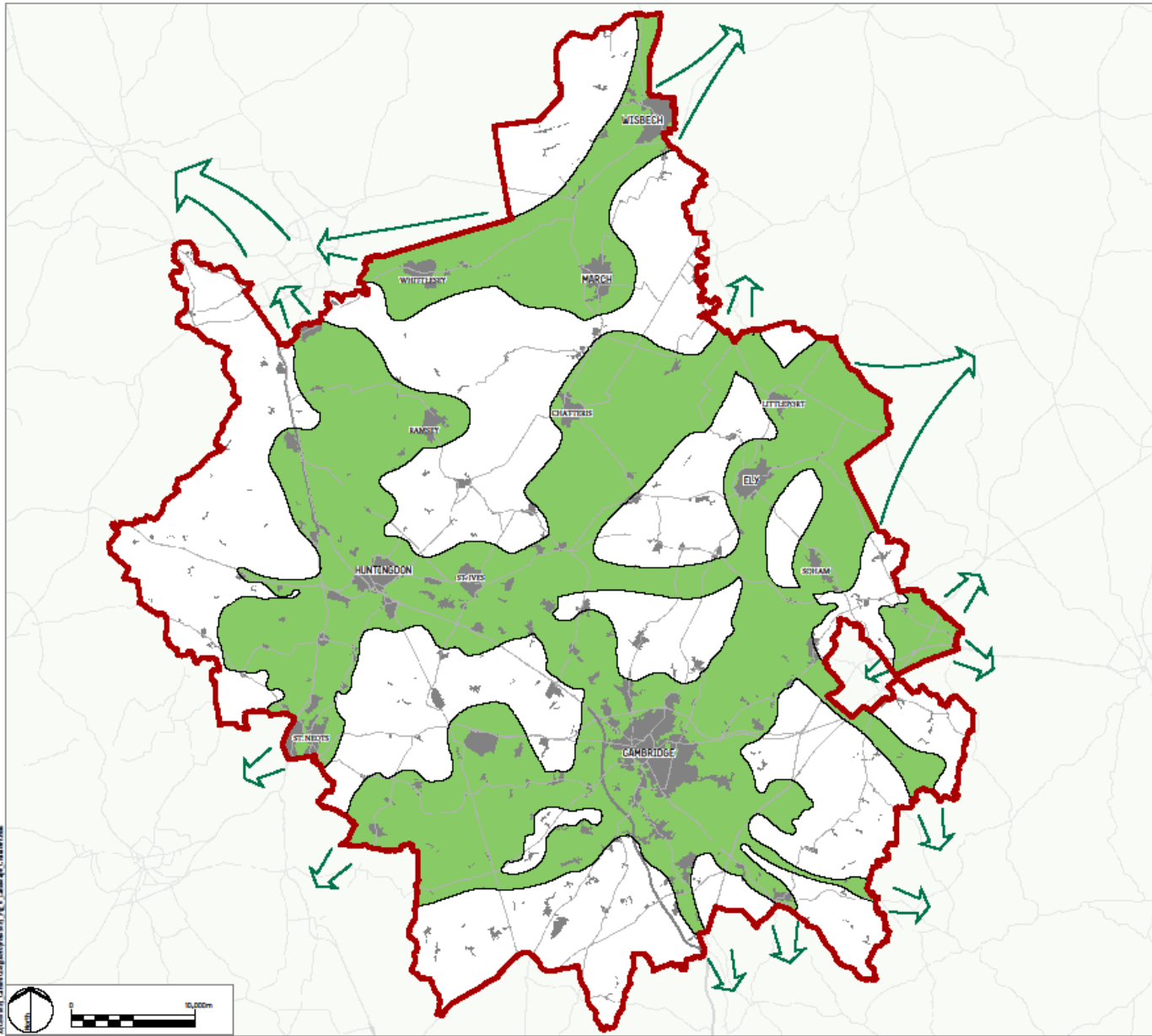
Green Infrastructure design guidance



Cambridgeshire Green Infrastructure Strategy: MK I



Cambridgeshire Green Infrastructure Strategy: MK II



LEGEND

- Study Area Boundary
- Strategic Green Infrastructure Network
- Links to/from Strategic Green Infrastructure Network

REV.	DESCRIPTION	APP.	DATE
------	-------------	------	------

LDĀDESIGN

PROJECT TITLE
CAMBRIDGESHIRE GREEN INFRASTRUCTURE STRATEGY

DRAWING TITLE
Cambridgeshire Strategic Green Infrastructure Network

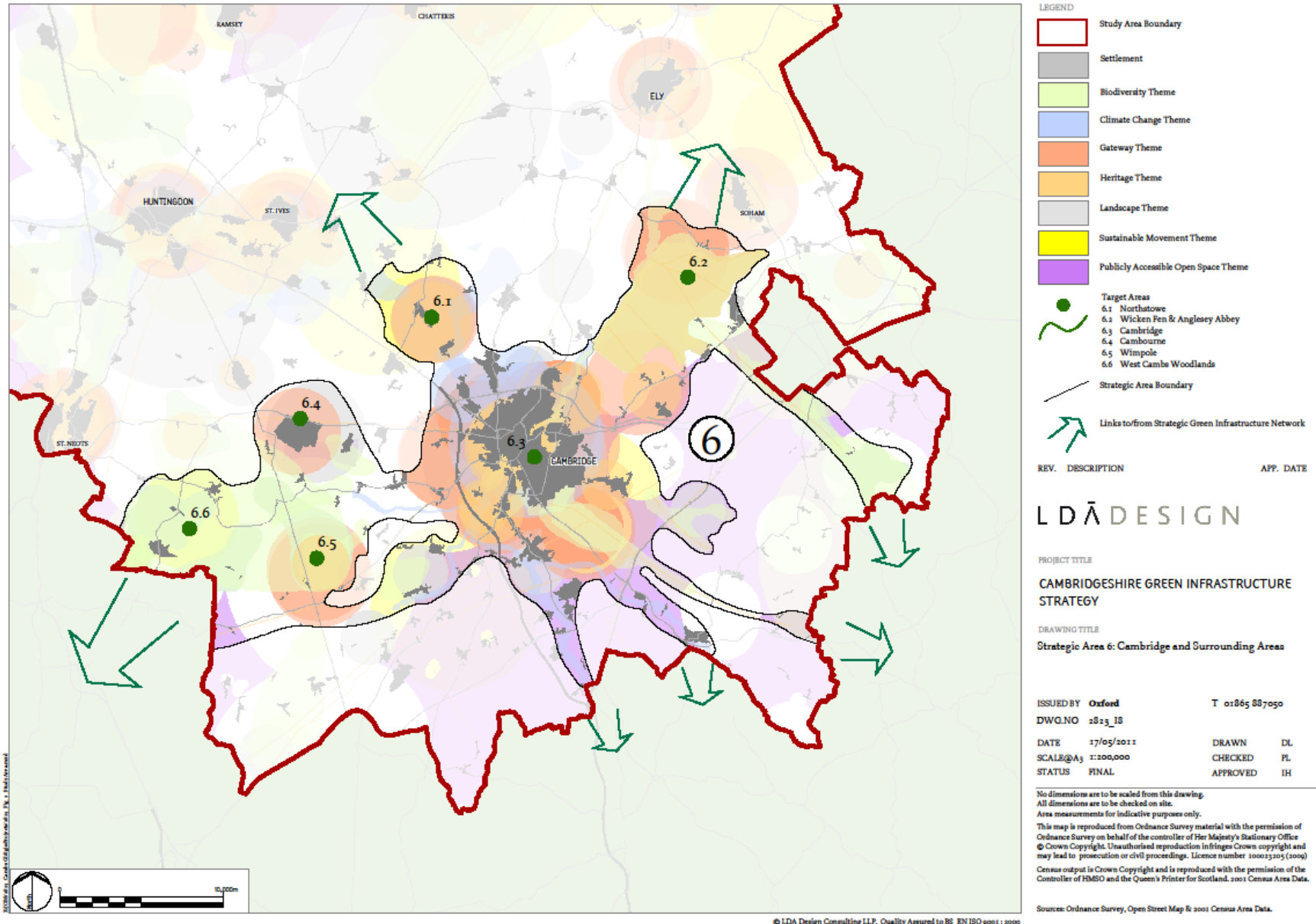
ISSUED BY	Oxford	T	01865 887050
DWG.NO	1823_1r		
DATE	17/05/2011	DRAWN	DL
SCALE@A3	1:300,000	CHECKED	PL
STATUS	FINAL	APPROVED	IH

No dimensions are to be scaled from this drawing.
All dimensions are to be checked on site.
Area measurements for indicative purposes only.

This map is reproduced from Ordnance Survey material with the permission of Ordnance Survey on behalf of the controller of Her Majesty's Stationary Office © Crown Copyright. Unauthorised reproduction infringes Crown copyright and may lead to prosecution or civil proceedings. Licence number 10002305 (1009)
Census output is Crown Copyright and is reproduced with the permission of the Controller of HMSO and the Queen's Printer for Scotland. 2001 Census Area Data. Cambridgeshire Landscape Outlines © Cambridgeshire County Council
National Landscape Character Areas © Natural England [June 2009]

Sources: Ordnance Survey, Open Street Map, 2001 Census Area Data, Cambridgeshire Planning Council & Natural England

Cambridgeshire Green Infrastructure Strategy MK II



Models for Funding Green Space

1. Traditional Local Authority funding
2. Multi-agency public sector funding
3. Taxation initiatives
4. Planning and development opportunities
5. Service Charges
6. Income-generating opportunities
7. Endowments
8. Voluntary sector involvement



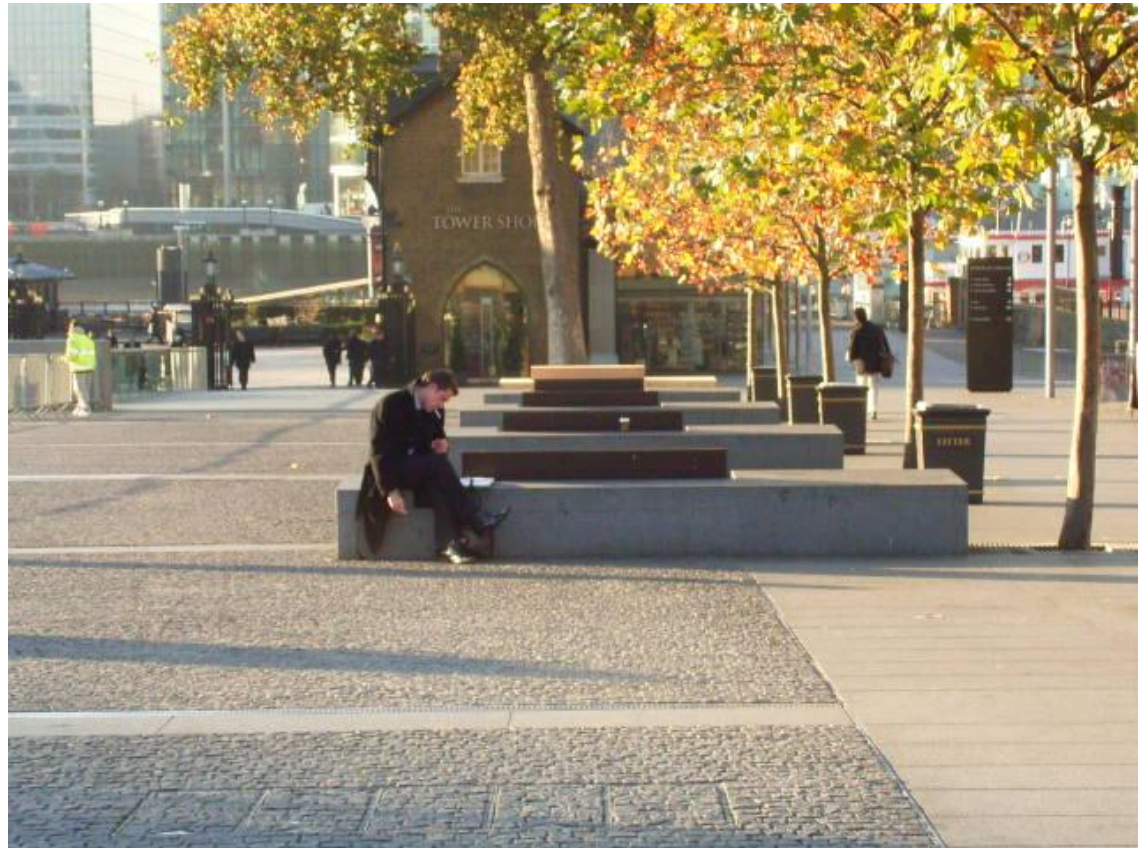
Traditional Local Authority funding (Parc Andre de Citroen , Paris)



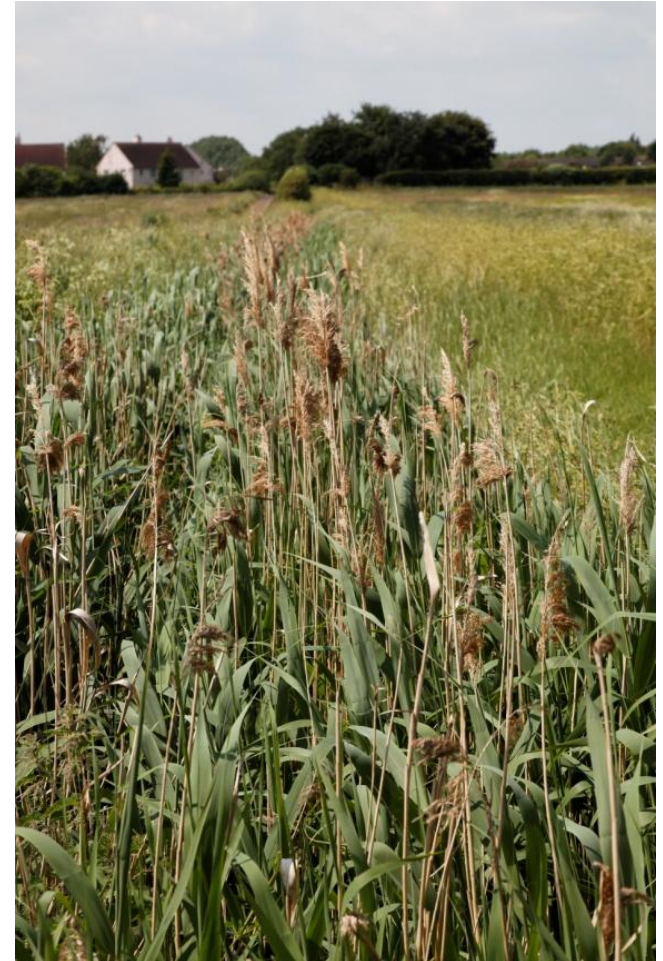
Multi-agency public sector funding (River Nene Regional Park)



Taxation initiatives (More London – BID)



Planning and development opportunities (Clay Farm, Cambridge)



Services Charges (Fairfield Park, Hitchin)



Income generating opportunities (Marston Vale Forest Centre)



Endowments

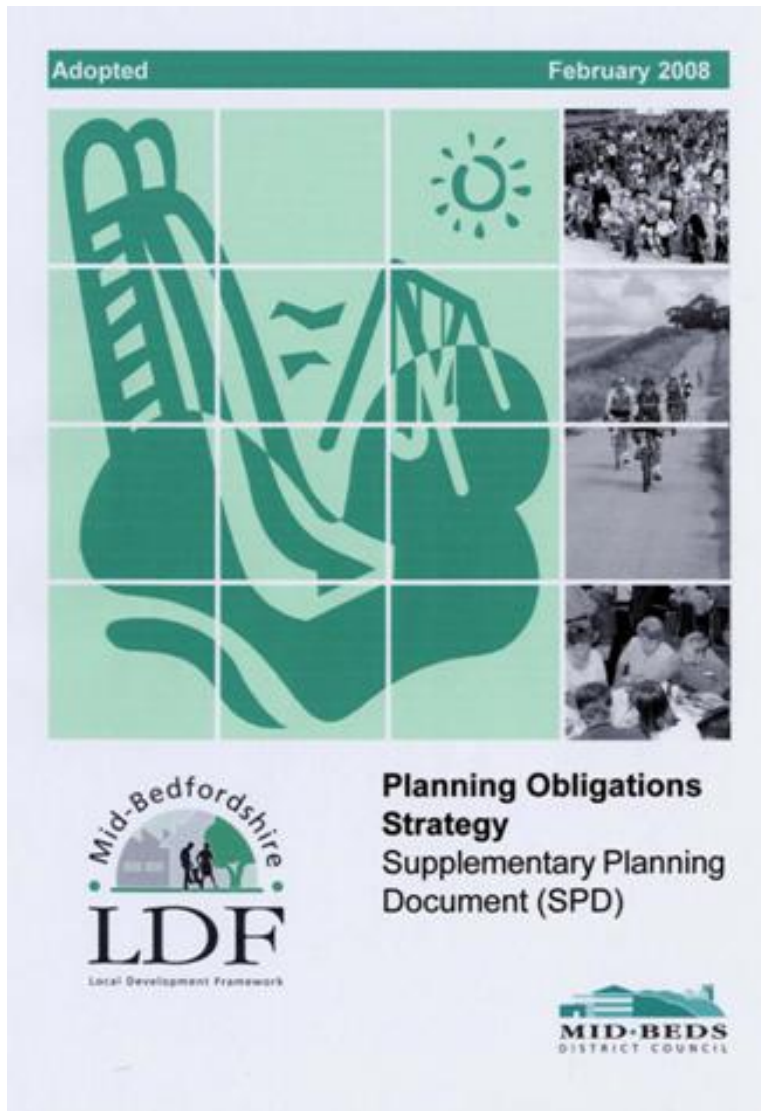
(Milton Keynes Parks Trust)



Voluntary/Charity sector involvement (Cambourne)



Funding green infrastructure delivery through development



- Section 106 agreements
- Community Infrastructure Levy (CIL)
- Planning Obligations

Funding sources: a constantly changing landscape



Environmental Stewardship - Devils Dyke

Key Challenges & Issues

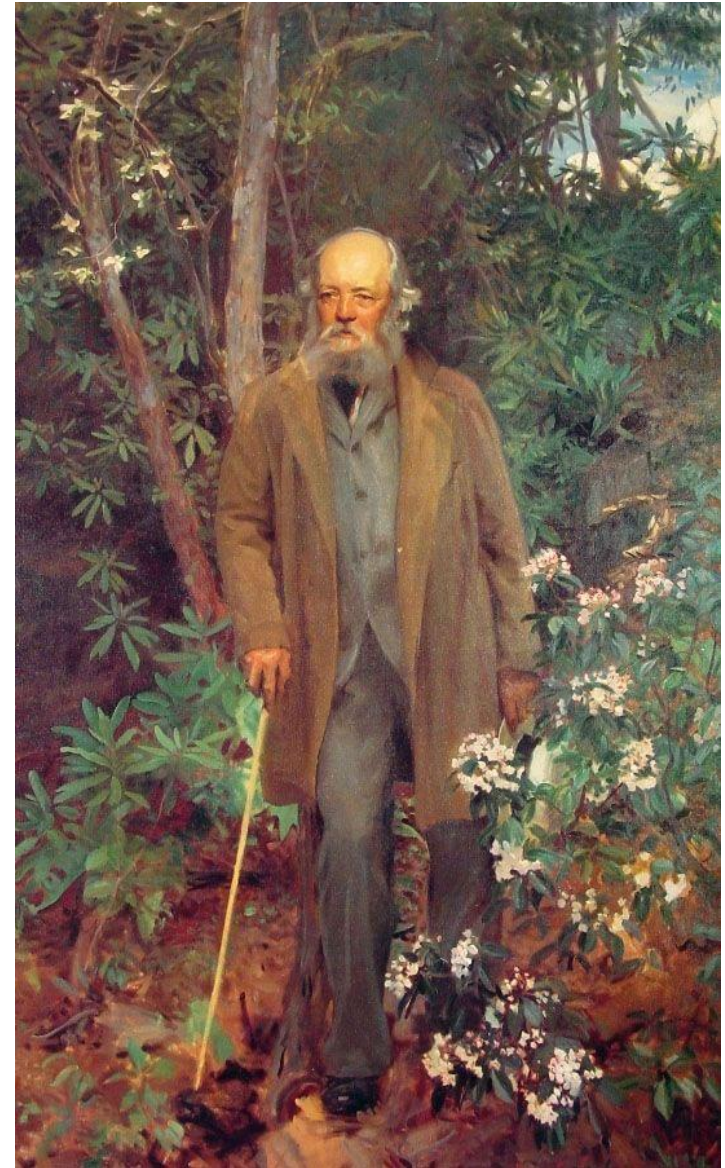
1. Policy Support
 - Clear LDF policies for GI
 - CIL, Planning Obligations + ?
2. Funding
 - Implementation
 - Management
3. Co-ordination with landowners, developer & community
 - Interaction with new projects
 - Local Nature Partnerships
 - Green Infrastructure Forum
4. Governance for schemes
 - Local Authority
 - Developer led
 - Trusts



Frederick Law Olmstead

"We want a ground to which people may easily go when the day's work is done, and where they may stroll for an hour, seeing hearing and feeling nothing of the bustle and jar of the streets, where they shall, in effect, find the city put far away from them..."

Not just a romanticastute visionary



the**landscape**partnership





the**landscape**partnership

'The measure of a city's greatness is to be found in the quality of its public spaces, its parks and squares.' J Ruskin

