

What is the value of green spaces?



Catherine Cairns

**Chair of Cambridgeshire Green Infrastructure
Forum**



Content of presentation

1. Introduction
2. Social benefits
3. Economic benefits
4. Environmental benefits
5. Green space planning and creation in the Cambridge area
6. Opportunities for local communities under localism and the Local Nature Partnership
7. Sources of information and help

Why are green spaces and corridors (green infrastructure) so important?



Quality of place



Social benefits of green spaces

- Recreation: rest, play and exercise
- Outdoor classroom and reconnects people with nature
- Physical and mental health



- Encourages community cohesion
- Scope for community involvement with land
- Reduction in crime and anti social behaviour

Health benefits



People living within 500m of accessible greenspaces are 24% more active and fitter, especially important with rising childhood obesity rates

Reducing the sedentary population by just 1% would reduce morbidity and mortality rates and save UK >£1.4 billion

Proven mental health benefits of exercise and access to attractive green areas

Walking for Health Schemes have saved >£7 NHS money for every £1 invested

Economic benefits of green spaces



- High quality environment improves a place's image and consequently business and residential desirability
- It encourages employment and inward investment
- It adds value to surrounding property e.g. houses overlooking greenspaces attract a premium of 5%-15%
- High quality environment contributes to tourism and recreation
- Green areas provide flood alleviation through sustainable drainage with benefit:cost ratios of upto 4:1
- Nature conservation and farming add to local distinctiveness e.g local products and food
- Reduced health costs
- Trees absorb pollutants and provide cooling/shelter – important to help adaptation to climate change and saving energy

Environmental benefits of green spaces

- Providing space for nature and protection of existing natural habitats and species
- Opportunities for an enhanced network of natural systems
- Improved air and water quality
- Mitigate and adapt to climate change through flood amelioration, shade and pollution filters
- Opportunities for connection with cultural heritage
- Space for food and renewable energy production



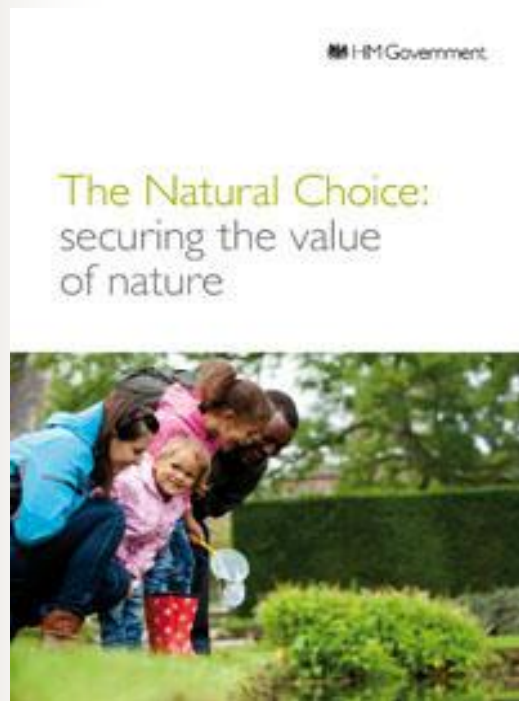
Sustainable drainage systems provide multifunctional benefits

SUSTAINABLE DRAINAGE



Cambridge Design and Adoption Guide

Ecosystem services



The products of natural systems from which people derive benefits, including goods and services

Provisioning services – food , timber etc

Regulating services – flood mitigation, climate regulation

Cultural services – spiritual and cultural; enrichment

Supporting services – soil formation and nutrient recycling

Case studies of multifunctionality: Peterborough



and Cambourne



Green space planning and creation in the Cambridge area

2004/5

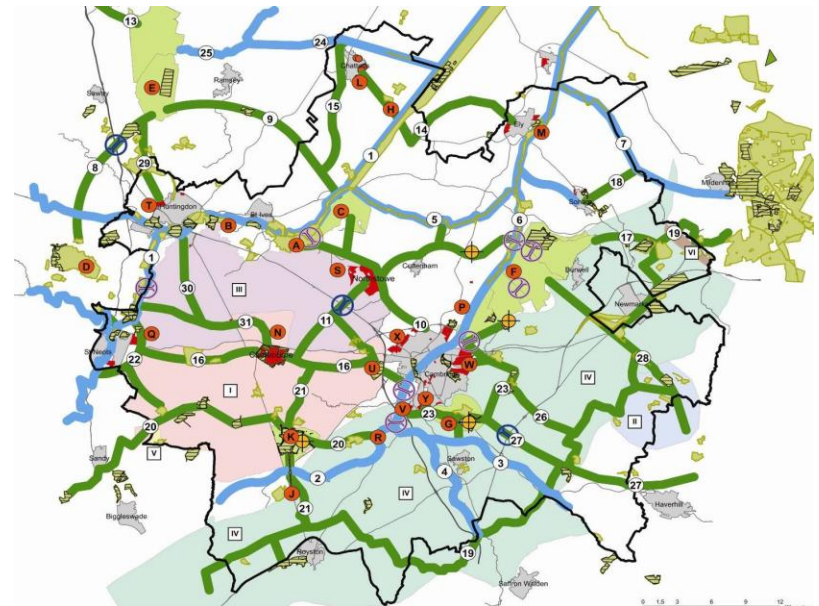
GI Forum for Cambridgeshire growth sub-region set up, chaired by Cambridgeshire Horizons. Green Infrastructure strategy prepared by consultants. GI project officer appointed.

2004-6

First tranche of Growth Areas Funding (GAF1) successfully bid for, with national programme launched by Minister at Coton Countryside Reserve, west of Cambridge. Four major GI projects funded in first round.

2006

GI strategy for Cambridge sub-region launched, GI forum then focuses on project co-ordination and delivery with GI project officer key to success.





History continued....

2006-8

Significant amount of funding awarded by Cambs. Horizons for priority GI projects from GAF2.

2008-11

Further funding for GI projects received through Housing Growth Fund but GI now lower priority for Government. GI project officer now funded 100% by Cambs. Horizons.

2009

Decision taken by GI Forum to update strategy and extend to whole county. Consultants appointed and funded by Cambs. Horizons (CH). Challenging process included two rounds of public consultation and took two years. Consultants dropped, and work then led by CH with significant input from local authority planning officers.

2011

New countywide GI strategy completed and endorsed by all LAs and CH.



Why a new strategy?

- Greater recognition of GI contribution to sustainable communities
- Strengthens the role of GI in planning process in securing implementation, investment and funding
- Extends the coverage of 2006 Strategy to the whole of Cambridgeshire enabling areas of GI deficiency and socio-economic challenge to be addressed. Natural England have also produced new ANGSt report for Cambs. to support GI strategy
- Provides a sound evidence base and context for delivering GI up to 2031
- Evidence to help identify investment opportunities and support GI project funding bids

Objectives of revised GI strategy

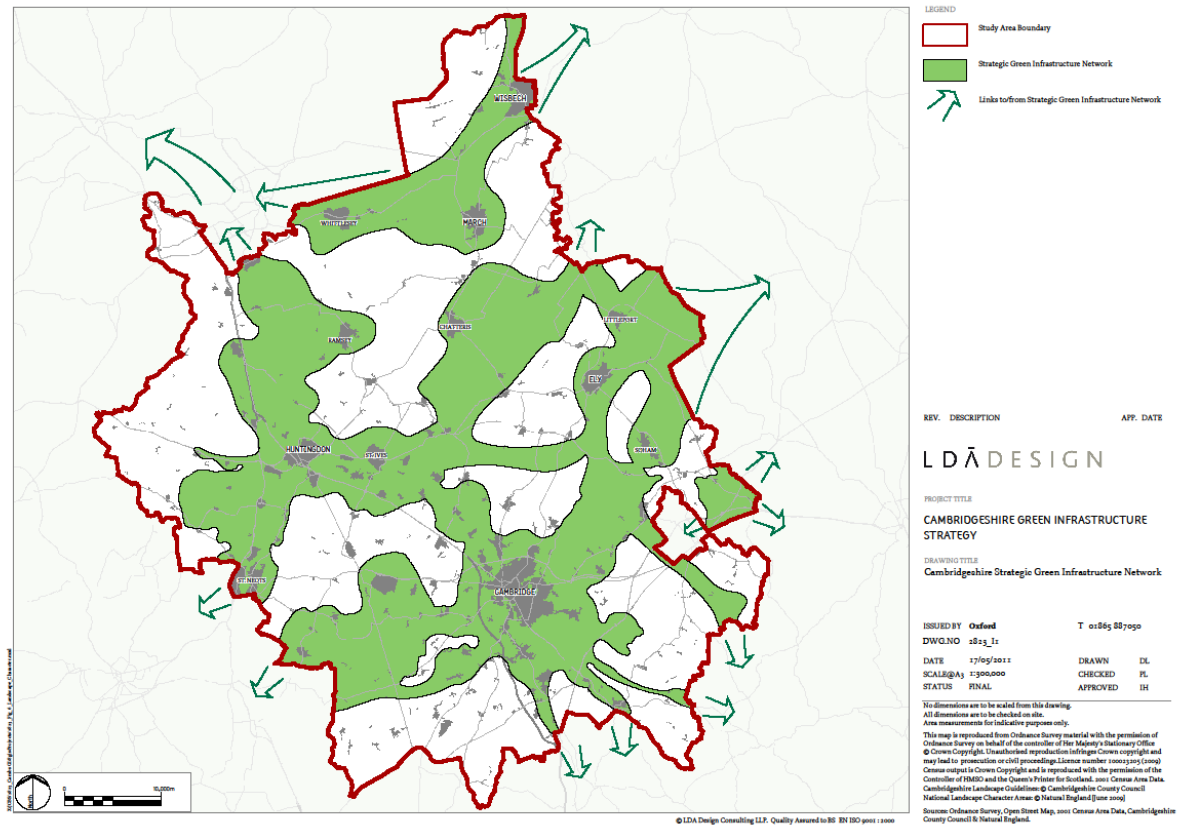
- Reverse the decline in biodiversity
- Mitigate and adapt to climate change
- Promote sustainable growth and economic development
- Support healthy living and well-being

Cambridgeshire Green Infrastructure Strategy

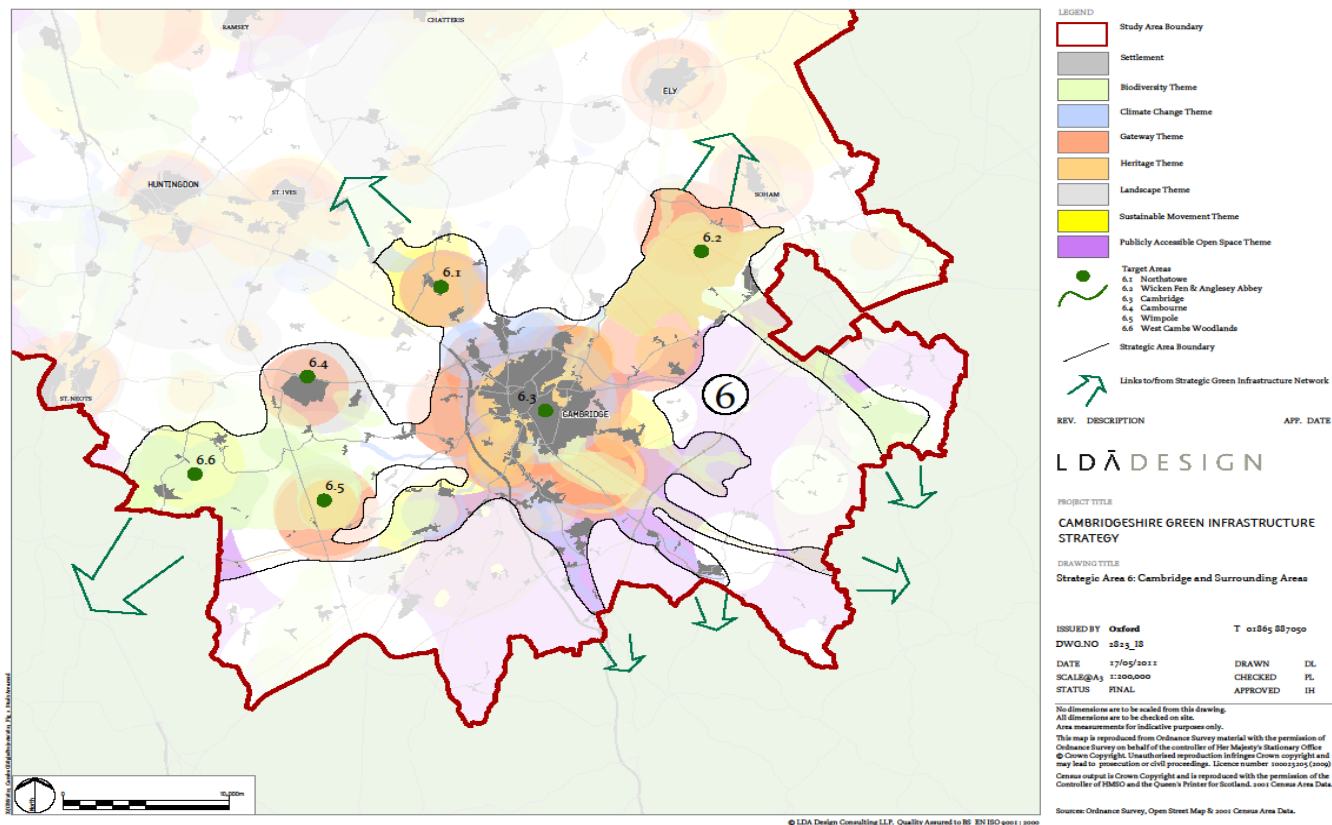


June 2011

2011 Cambridgeshire strategic network



Strategic area 6





Proposed Greater Cambridgeshire Local Nature Partnership (LNP)

- Idea was introduced in the Natural Environment White Paper in June 2011. Government invited new and existing partnerships to become LNPs, as they recognise that partnership working is the best way to achieve effective action for the natural environment.
- LNP will bring together knowledge and expertise from a wide range of stakeholders, as it is now widely understood that the natural environment also provides many economic and social benefits.
- A diverse range of individuals, organisations and businesses will come together to identify opportunities to protect and improve nature at a local level.
- LNPs will create a vision and plan of action of how the natural environment can be taken into account in decision making.
- Cambridgeshire GI Forum, with the Biodiversity Partnership, is now carrying out a series of capacity-building discussions ahead of formally applying to Defra to become a LNP. It is anticipated that the new LNP Board will comprise representatives from a wide range of organisations to reflect the social, economic and environmental benefits we heard about earlier. It will also include local authority and community interests.



What added value will this bring to Cambridgeshire?

1. Increased understanding and establishing good working links between existing economic, social and environment partnerships will result in aligning effort and co-operation, more efficient use of resources and better outcomes.
2. Local leadership from the LNP will raise awareness about the vital services and benefits which a healthy natural environment brings for people, communities and the local economy.
3. Use the GI strategy, LNP vision and action plan to embed natural value into local decision-making and policies e.g. local plans.
4. Provide integrated advice and evidence to local authorities on the natural environment.
5. Foster good links between the LNP and the LEP and re-organised health services in their formative periods.
6. Provide leadership for engaging local communities with the natural environment. Guidance on how Localism Act can help the planning, creation and maintenance of local green spaces
7. Stakeholder event on 18th May to discuss detail of the LNP



Localism and green spaces

Localism Act 2011 gives potential opportunities for communities to engage in planning, creating and managing local green spaces. Key measures to increase the power of **local communities** include:

- A new **Right to Bid**, which will give residents the opportunity to take over local assets like shops and pubs and keep them part of local life
- Introduces a new **right to draw up a neighbourhood plan**
- Enables communities to bring forward **proposals for development** they want - such as homes, shops, playgrounds, green areas or meeting halls, through the Community Right to Build
- **Requires developers to consult** local communities before submitting certain applications.



Advice and information

Green Infrastructure Strategy and Appendices can be found at:

http://www.cambridgeshirehorizons.co.uk/our_challenge/GISreview.aspx

Natural England Green Infrastructure Guidance, case studies and Nature Nearby

<http://naturalengland.etraderstores.com/NaturalEnglandShop/Product.aspx?ProductID=cda68051-1381-452f-8e5b-8d7297783bbd>

TCPA eco-towns worksheet on green infrastructure <http://www.tcpa.org.uk/pages/green-infrastructure.html>

Forest Research publications

[http://www.forestresearch.gov.uk/pdf/urgp_benefits_of_green_infrastructure.pdf/\\$FILE/urgp_benefits_of_green_infrastructure.pdf](http://www.forestresearch.gov.uk/pdf/urgp_benefits_of_green_infrastructure.pdf/$FILE/urgp_benefits_of_green_infrastructure.pdf)

Green infrastructure by design: adding value to development. A guide for sustainable communities in Milton Keynes South Midlands

http://www.naturalengland.org.uk/Images/MKSM%20GI%20by%20Design%20Guide%20Single%20Page%20Spread%20Web_tcm6-19781.pdf



Advice from Shape East

- Shape East offers a wide range of Design Support & Enabling Services, to help meet the needs of developers, design teams, local authorities and local communities. As well as monthly Design Review meetings, Shape East offers training workshops/sessions, local panel support, community engagement and design surgeries.
- Shape East offers a wide range of consultation services, working with all those involved to ensure that these new places are better places for everyone to live, work and play.
- Shape East's aim is to bridge the gap between members of the local community, design professionals and decision makers, providing the necessary information and engagement to give all people a say in local changes.

Design Support Enablers and Design

Review panel members consist of a group of respected built environment professionals from a range of fields including development, architecture, engineering, planning, transport, ecology, heritage, sustainability and energy efficiency, landscape architecture, urban design, public art and leisure.

Contact details for Shape East:

01223 462 606 mail@shape-east.org.uk