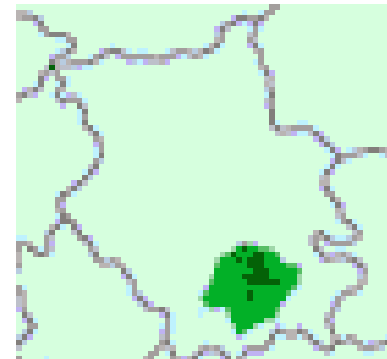


The Cambridge Green Belt



Some six to ten miles wide, extending from the villages of Oakington, Cottenham and Waterbeach in the North, to Pampisford, Whittlesford and Fowlmere along the A505 in the South.

To the East it stretches halfway to Newmarket at Six Mile Bottom, and to the west to the villages of Foxton, Toft, and Bar Hill.



Status of Green Belt

- **A planning zone: not a statutory protected area**
- **Intended permanence**
- **Responsibility of the Local Authority to review its boundaries and settlement policies**
- **Preparation of the Local Plan**

Purposes of Green Belt

- **Check urban sprawl**
- **Prevent merging of towns**
- **Safeguard countryside from encroachment**
- **Preserve setting of historic towns**
- **Assist in urban regeneration**

How effective has the Green Belt been?

Positive effects:

- **Restricted ribbon development and urban sprawl**
- **Contained the spatial growth of the city**
- **Protected villages from encroachment**
- **Protected landscape South and West of city**
- **Protected the setting of the city**
- **Encouraged infill and brownfield sites**



How effective has the Green Belt been?

Negative effects:

- **Restricted growth for housing and commercial use**
- **Encouraged development in villages beyond the GB**
- **Increased car dependency and traffic congestion**

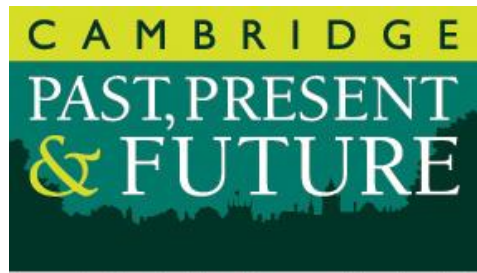


Green Belt Planning

- **PPG2 presumption against development in the Green Belt**
- **NPPF inappropriate development should not be approved**
- **Lack of clarity as to what is “inappropriate”**
- **Responsibility falls on Local Authorities to interpret**

Is the Green Belt still relevant?

- **Holford Report 1950:** policy of containment with population restricted to 100,000
- **Cambridge Phenomenon necessitated change of policy**
- **2006 Local Plan expansion of city fringe**
- **Urban sprawl still a real threat so GB purpose still valid**
- **Absolutist approach that GB is sacrosanct impractical**
- **Meddling with the GB carries a high political risk: people convinced it's "a good thing"**
- **Alternative mechanism for GB enhancement eg Green Infrastructure, Environmental Stewardship**
- **Need clarity about what constitutes inappropriate development in the Green Belt**
- **Clear unambiguous guidelines needed as part of preparation of Local Plan**



Formerly Cambridge Preservation Society



Cambridge Past, Present & Future —

a local charity working to keep Cambridge and its surroundings special by positively influencing planning developments, delivering environmental education and managing the green spaces and historic buildings in its care — **for the benefit of all.**

Registered Charity No. 204121. Non-profit making company limited by guarantee, registered in England No. No 23983.